

# Data Center Solutions for System Integrators and VARs



**Comstor™**

**PANDUIT™**

building a smarter,  
unified business foundation

Connect. Manage. Automate.

### Optimize the Physical Infrastructure

As a result of the constantly changing, complex IT landscape, the data center will continue to face unique demands on its physical infrastructure. The physical infrastructure can have a significant impact on the performance, efficiency and reliability of the data center. Panduit provides reliable and scalable infrastructure that can be deployed across multiple technology platforms.

This quick reference catalogue will help you easily identify supporting infrastructure solutions to consider as part of the overall data center design and deployment.

Just follow these quick and easy steps:

**Step 1:** Using the interactive contents page – Identify the solution area, e.g. Connectivity, Cabling

**Step 2:** Identify the sub category

**Step 3:** Choose from the list of available products

For further product information please refer to [www.panduit.com](http://www.panduit.com).

**Quick Tip:** At [panduit.com](http://panduit.com) place the “Catalogue SKU” in the search box to receive more detailed product information.

### Why Panduit and Comstor?

Panduit draws upon a deep expertise in providing world-class Data Center solutions and designs based on industry best practices and offer a combination of services, software, and products that result in optimised physical infrastructures for the Data Centre. Cisco and Panduit provide solutions that optimize data centers to help customers increase agility and optimize operational efficiency.

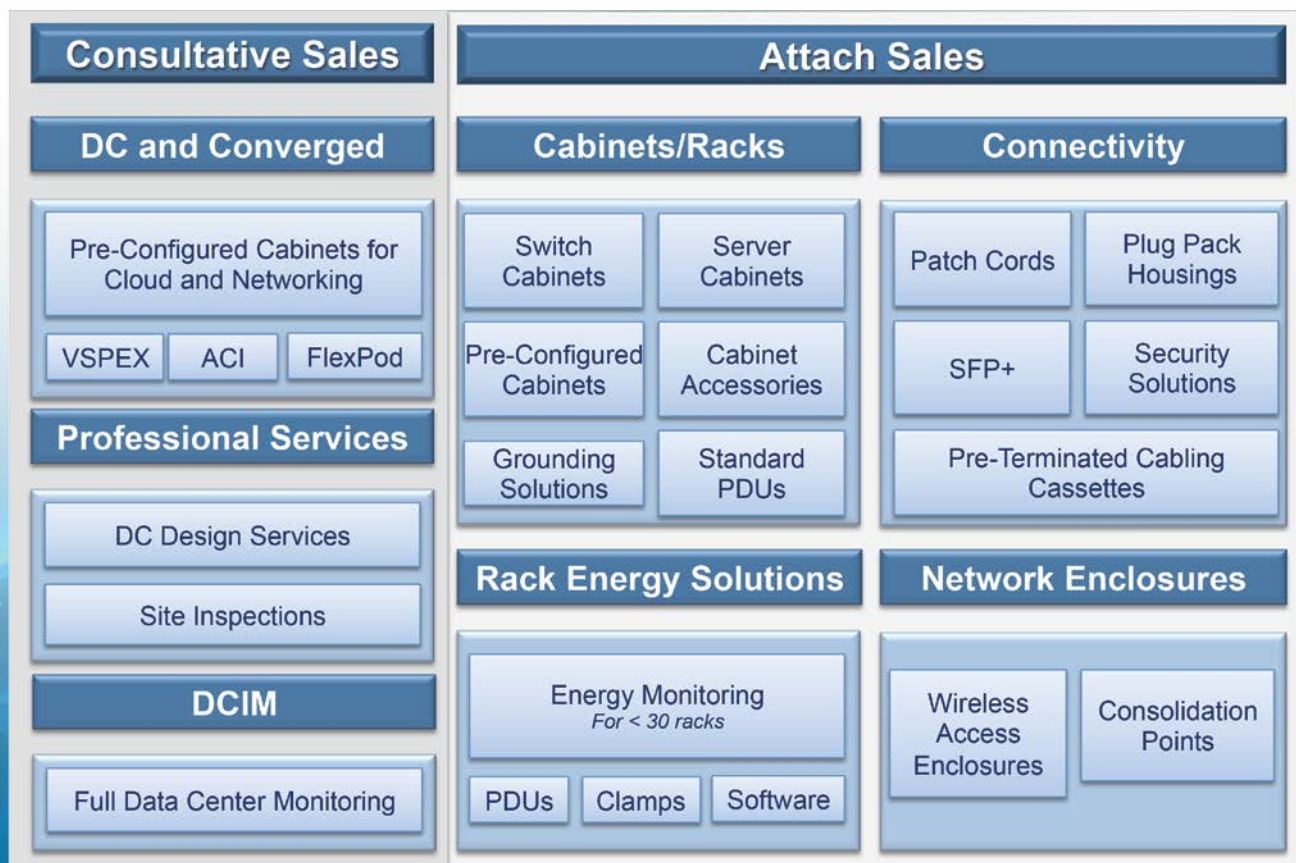
Comstor are the leading distributor of joint Cisco and Panduit solutions in EMEA. A “one-stop-shop” for all compute and infrastructure data centre requirements, Comstor have partnered with Panduit to bring you a full range of data centre orientated infrastructure products that have an impressive pedigree of being successfully integrated with Cisco UCS solutions.

Procuring your data centre products from Comstor will give you access to a full range of value added services including:

- The opportunity to become a Panduit Partner Program member entitling you to a range of valuable benefits from market development funds (MDF) to certifications and training
- Exclusive Comstor reseller partner discounts
- Exclusive Comstor product promotions and incentives
- Invitation to the Panduit European Partner Summit
- Exclusive access to the Panduit Customer Briefing Centres in London, Paris, Brussels, Frankfurt and Dubai
- Lead generation programs

Talk to your local Panduit account manager to discover how you can take advantage of all the business opportunities Comstor and Panduit can deliver.

### Panduit Baseline Solutions - Portfolio for Data Centers



Week	Monday	Tuesday	Wednesday	Thursday	Friday	Saturday	Sunday
1							
2							
3							
4							
5							
6							
7							
8							
9							
10							
11							
12							
13							
14							
15							
16							
17							
18							
19							
20							
21							
22							
23							
24							
25							
26							
27							
28							
29							
30							
31							
32							
33							
34							
35							
36							
37							
38							
39							
40							
41							
42							
43							
44							
45							
46							
47							
48							
49							
50							
51							
52							



### Pre-Configured Solutions

As a leading physical infrastructure partner for Cisco, Panduit works with Cisco engineering and product teams to develop optimal physical layer solutions for their networking products. As such, these Panduit pre-configured physical infrastructures were designed specifically for the Cisco^ UCS, Nexus, and Catalyst platforms to balance scalability, power and thermal characteristics. This approach ensures that the physical infrastructure deployments are optimized for power, cooling, and performance, lowering infrastructure risks and costs while increasing agility and sustainability.

#### Pre-Configured Cabinet for Cisco® Unified Computing Systems (UCS)



Part Number	Description	Std. Pkg. Qty.	Std. Ctn. Qty.
<b>CQ5018S6B</b>	Pre-Configured Physical Infrastructure for UCS Base with 24" wide Net-Access™ S-Type Cabinet and all necessary cable management, grounding jumpers and patch panels pre-assembled together.	1	—
<b>CQ5108S652B</b>	Pre-Configured Physical Infrastructure for UCS Base with 24" wide Net-SERV® Cabinet and all necessary cable management, grounding jumpers, and patch panels pre-assembled together.	1	—
<b>CQ5108S7B</b>	Pre-Configured Physical Infrastructure for UCS Base with 28" wide Net-Access™ S-Type Cabinet and all necessary cable management, grounding jumpers and patch panels pre-assembled together.	1	—
<b>CQ5108S752B</b>	Pre-Configured Physical Infrastructure for UCS Base with 28" wide Net-SERV® Cabinet and all necessary cable management, grounding jumpers, and patch panels pre-assembled together.	1	—

#### Pre-Configured Cabinet for Cisco^ Nexus 7009 Switch



Part Number	Description	Std. Pkg. Qty.	Std. Ctn. Qty.
<b>CQ7009B</b>	"Base" Pre-Configured Physical Infrastructure for Cisco® Nexus 7009 with Net-Access™ N-Type Cabinet, and intake ducting, as well as all necessary cable management, grounding jumpers and patch panels.	1	—
<b>CQ7009F4</b>	"Medium Fiber" Pre-Configured Physical Infrastructure for Cisco® Nexus 7009 with Net-Access™ N-Type Cabinet and intake ducting, as well as all necessary cable management, grounding jumpers, patch panels, and MTP-LC Hydra cable assemblies (bulk packaged to accommodate four fiber I/O Modules).	1	—
<b>CQ7009C4</b>	"Medium Copper" Pre-Configured Physical Infrastructure for Cisco® Nexus 7009 with Net-Access™ N-Type Cabinet and intake ducting, as well as all necessary cable management, grounding jumpers, patch panels, and copper Category 6A patch cords (bulk packaged to accommodate four copper I/O Modules).	1	—
<b>CQ7009C6</b>	"Heavy Copper" Pre-Configured Physical Infrastructure for Cisco® Nexus 7009 with Net-Access™ N-Type Cabinet and intake ducting, as well as all necessary cable management, grounding jumpers, patch panels, and copper Category 6A patch cords (bulk packaged to accommodate six copper I/O Modules).	1	—

^ Cisco is a registered trademark of Cisco Technology, Inc.

## Pre-Configured Cabinet for Cisco^ Nexus 7010 Switch



Part Number	Description	Std. Pkg. Qty.	Std. Ctn. Qty.
<b>CQ7010B</b>	"Base" Pre-Configured Physical Infrastructure for Cisco® Nexus 7010 with Net-Access™ N-Type Cabinet, and all necessary cable management, grounding jumpers and patch panels pre-assembled together.	1	—
<b>CQ7010F4</b>	"Medium Fiber" Pre-Configured Physical Infrastructure for Cisco® Nexus 7010 with Net-Access™ N-Type Cabinet, and all necessary cable management, grounding jumpers, patch panels, and LC-LC patch cords (bulk packaged to accommodate 4 additional fiber line cards) pre-assembled together.	1	—
<b>CQ7010C4</b>	"Medium Copper" Pre-Configured Physical Infrastructure for Cisco® Nexus 7010 with Net-Access™ N-Type Cabinet, and all necessary cable management, grounding jumpers, patch panels, and copper CAT6 patch cords (bulk packaged to accommodate 4 additional copper line cards) pre-assembled together.	1	—
<b>CQ7010C6</b>	"Heavy Copper" Pre-Configured Physical Infrastructure for Cisco® Nexus 7010 with Net-Access™ N-Type Cabinet, and all necessary cable management, grounding jumpers, patch panels, and CAT6 patch cords (bulk packaged to accommodate 6 additional copper line cards) pre-assembled together.	1	—

## Cabinet for Cisco® Catalyst 6509 Switch



**CQ6509CN1B**

Part Number	Description	Std. Pkg. Qty.	Std. Ctn. Qty.
<b>CQ6509B</b>	"Base" Pre-Configured Physical Infrastructure for Cisco® Catalyst 6509 with Net-Access™ N-Type Cabinet, and all necessary cable management, grounding jumpers and patch panels pre-assembled together.	1	—



^Cisco is a registered trademark of Cisco Technology, Inc.

### Pre-Bundled Cabinets for Cloud Applications

Part Number	Description	Std. Pkg. Qty.	Std. Ctn. Qty.
<b>CQFEK679</b>	FlexPod Express Build-Up Kit Non-Dynamic Version 600 X 1200 X 42RU.	1	—
<b>CQFPK679</b>	FlexPod Single UCS Chassis Build-Up Kit Non-dynamic Version 600 X 1200 X 42RU.	1	—
<b>CQSFEK679</b>	FlexPod Express Build-Up Kit Dynamic Version 600 X 1200 X 42RU.	1	—
<b>CQSFPK679</b>	FlexPod Single UCS Chassis Build-Up Kit Dynamic Version 600 X 1200 X 42RU.	1	—

### Pre-Configured Cabinets for VSPEX



Part Number	Description	Std. Pkg. Qty.	Std. Ctn. Qty.
<b>CQEMCM679</b>	100 VM pre-configured, 600 x 1200, 42 RU standard cabinet.	1	—
<b>CQEMCMP679</b>	125 VM pre-configured, 600 x 1200, 42 RU standard cabinet.	1	—
<b>CQEMCS6079</b>	50 VM pre-configured, 600 x 1070, 42 RU standard cabinet.	1	—
<b>CQSEMCL679</b>	250 VM pre-configured, 600 x 1200, 42 RU dynamic cabinet.	1	—
<b>CQSEMCM679</b>	100 VM pre-configured, 600 x 1200, 42 RU dynamic cabinet.	1	—
<b>CQSEMCM679</b>	125 VM pre-configured, 600 x 1200, 42 RU dynamic cabinet.	1	—
<b>CQSEMCS6079</b>	50 VM pre-configured, 600 x 1070, 42 RU dynamic cabinet.	1	—

### Pre-Configured Cable Kit



Part Number	Description	Std. Pkg. Qty.	Std. Ctn. Qty.
<b>CQFECK</b>	Pre-configured cable kit for small cloud architecture (two server).	1	—
<b>CQFEMCK</b>	Pre-configured cable kit for medium cloud architecture (four server).	1	—



## Cabinets and Racks

**Panduit 4 post racks are designed to be an effective solution for the telecommunications room or network row.**

- These racks allow maximum equipment utilisation for areas with either low or high ceilings.
- The rack can be used to manage high performance copper and fibre patch cables.
- This modular rack system is compatible with Panduit horizontal and vertical cable managers.
- The open design allows for maximum airflow in and around the rack.

**Net-Access™ Switch Cabinets deploy inset frames which allows for high cable volumes to be deployed without hindering air flow or crossing service points.**

- Ducting kits are available for all Cisco switches to enable front to back air flow.
- Cabinets can be ganged together to give easy cross connect patching without breaking the front to back air seal for thermal efficiency.

**Net-Access™ Server Cabinets are designed for passing cables down the sides with easy access cable cut throughs in the roof.**

- Using preterminated cassettes can be used with a vertical patching strip to free up RU space for IT equipment using vertical patch panels.

### Net-Access™ Switch and Server Standard Cabinets



**N8512B**



**S6212B**

Part Number	Description	Std. Pkg. Qty.	Std. Ctn. Qty.
<b>N8512B</b>	Net-Access™ N-Type Cabinet frame with top panel. Tapped equipment rails (12-24). Dual hinge perforated front door opens to the left or right. Split perforated rear doors open in the middle to minimize door swing footprint. Solid side panels (2). Two sets of #12-24 threaded equipment mounting rails. 45 RU cable management on front and rear of front posts. Dimensions: 84.0"H x 31.5"W x 42.0"D (2134mm x 800mm x 1067mm).	1	—
<b>N8512BC</b>	Net-Access™ N-Type Cabinet frame with top panel. Cage nut rails. Dual hinge perforated front door opens to the left or right. Split perforated rear doors open in the middle to minimize door swing footprint. Solid side panels (2). Two sets of cage nut equipment mounting rails. 45 RU cable management on front and rear of front posts. Dimensions: 84.0"H x 31.5"W x 42.0"D (2134mm x 800mm x 1067mm).	1	—
<b>N8522BC</b>	Net-Access™ N-Type Cabinet frame with top panel. Cage nut rails. Dual hinge perforated front door opens to the left or right. Split perforated rear doors open in the middle to minimize door swing footprint. Solid side panels (2). Two sets of cage nut equipment mounting rails. 45 RU cable management on front and rear of front posts. Dimensions: 84.0"H x 31.5"W x 48.0"D (2134mm x 800mm x 1219mm).	1	—
<b>S6212B</b>	Net-Access™ S-Type Cabinet frame with top panel. Single hinge perforated front door. Split perforated rear doors open in the middle to minimize door swing footprint. Solid side panels (2), casters, POU brackets (1 set), cage nut rails (2 sets). Dimensions: 79.8"H x 23.6"W x 48.0"D (2026mm x 600mm x 1219mm).	1	—
<b>S6222B</b>	S-Type Server Cabinet, 600 x 42RU x 1200mm, 2 Standard Side Panels, Black, Single Hinge Perf Front Door, Split Rear Perf Door, Rear Short Fingers, Cage Nut Rails, (2) 2-Piece PDU Brackets, Casters, Dynamic 1250-lb Load Rated w/ Shock Pallet.	1	—
<b>S6222BSPX-CCF119</b>	S-Type Server Cabinet, 600 mm x 42 RU x 1200mm, two standard side panels, single hinge perforated front door, split rear perforated door, rear short fingers, cage nut rails, two 2-piece PDU brackets, casters, dynamic 1250 lb. load rated with shock pallet, Black.	1	—

### Net-Access™ Switch and Server Standard Cabinets

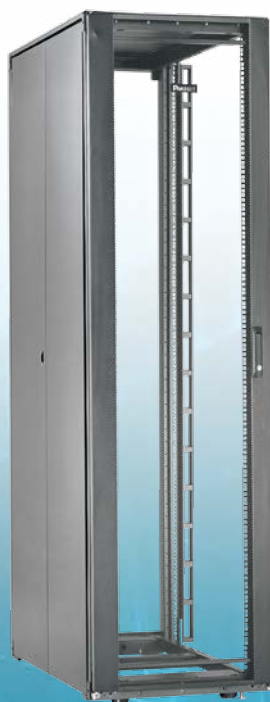


**N8512B**



**S6212B**

<b>S6522B</b>	Net-Access™ S-Type Cabinet frame with top panel. Single hinge perforated front door. Split perforated rear doors open in the middle to minimize door swing footprint. Solid side panels (2), casters, POU brackets (1 set), cage nut rails (2 sets). Dimensions: 85.0"H x 23.6"W x 48.0"D (2160mm x 600mm x 1219mm)<CRLF>.	1	—
<b>S7222B</b>	Net-Access™ S-Type Cabinet frame with top panel. Single hinge perforated front door. Split perforated rear doors open in the middle to minimize door swing footprint. Solid side panels (2), casters, POU brackets (1 set), cage nut rails (2 sets). Dimensions: 79.8"H x 27.6"W x 48.0"D (2026mm x 700mm x 1219mm).	1	—
<b>S7222BD</b>	S-Type Dynamic Switch Cabinet - 700mm x 42RU x 1200mm, front single hinge door, rear split door, (2) side panels, air dams, cage nut rails, casters and POU brackets.	1	—
<b>S7512B</b>	Net-Access™ S-Type Cabinet frame with top panel. Single hinge perforated front door. Split perforated rear doors open in the middle to minimize door swing footprint. Solid side panels (2), casters, POU brackets (1 set), cage nut rails (2 sets). Dimensions: 85.0"H x 27.6"W x 42.0"D (2160mm x 700mm x 1067mm)<CRLF>	1	—
<b>S7522B</b>	Net-Access™ S-Type Cabinet frame with top panel. Single hinge perforated front door. Split perforated rear doors open in the middle to minimize door swing footprint. Solid side panels (2), casters, POU brackets (1 set), cage nut rails (2 sets). Dimensions: 85.0"H x 27.6"W x 48.0"D (2160mm x 700mm x 1219mm).	1	—
<b>S8212B</b>	800mm W x 42 RU x 1070mm D S-Type cabinet with single front perforated door, split perforated rear doors, two side panels, casters, cage nut rails, switch configured, front fingers, no POU bracket, Black.	1	—
<b>S8512BA</b>	Net-Access™ S-Type Cabinet frame with top panel. Single hinge perforated front door. Split perforated rear doors open in the middle to minimize door swing footprint. Solid Side Panels (2), casters, cage nut rails (2 sets) and switch configured with front cable management. Dimensions: 79.8"H x 31.5"W x 48.0"D (2026mm x 800mm x 1219mm)	1	—





## Enterprise Cabinets

The 12 and 24 RU Net-Access Enterprise Cabinets store switches, patching, and servers used in office and small business areas. They are easy to roll away under a desk or in a closet. The ability of the cabinet to easily move where needed, enables fast setups and quick changes of network capabilities. Perforated doors encourage air flow to help cool equipment in tight spaces.



**E6212B1**

Part Number	Description	Std. Pkg. Qty.	Std. Ctn. Qty.
<b>E6212B1</b>	Enterprise cabinet, 12 RU, single hinge perforated front and rear doors with keyed swing handles, (2) solid single piece side panels with ¼ turn locks, and casters. Fully assembled. Dimensions: 25.7"H x 23.5"W x 42.0"D (654mm x 600mm x 1070mm).	1	—
<b>E6212B1FP</b>	Enterprise cabinet, 12 RU, single hinge perforated front and rear doors with keyed swing handles, (2) solid single piece side panels with ¼ turn locks, and casters. Flat packaged. Dimensions: 25.7"H x 23.5"W x 42.0"D (654mm x 600mm x 1070mm).	1	—
<b>E6212B1FP5</b>	Enterprise cabinet, 12 RU, single hinge perforated front and rear doors with keyed swing handles, (2) solid single piece side panels with ¼ turn locks, and casters. Flat packaged 5 per pallet. Dimensions: 25.7"H x 23.5"W x 42.0"D (654mm x 600mm x 1070mm).	1	—
<b>E6412B2</b>	Enterprise cabinet, 24 RU, single hinge perforated front and rear doors with keyed swing handles, (2) solid single piece side panels with ¼ turn locks, and casters. Fully assembled. Dimensions: 46.7"H x 23.5"W x 42.0"D (1187mm x 600mm x 1070mm).	1	—
<b>E6412B2FP</b>	Enterprise cabinet, 24 RU, single hinge perforated front and rear doors with keyed swing handles, (2) solid single piece side panels with ¼ turn locks, and casters. Flat packaged. Dimensions: 46.7"H x 23.5"W x 42.0"D (1187mm x 600mm x 1070mm).	1	—
<b>E6412B2FP5</b>	Enterprise cabinet, 24 RU, single hinge perforated front and rear doors with keyed swing handles, (2) solid single piece side panels with ¼ turn locks, and casters. Flat packaged 5 per pallet. Dimensions: 46.7"H x 23.5"W x 42.0"D (1187mm x 600mm x 1070mm).	1	—

## Open Racks



**ER4P23**



**R2PS**

Panduit 4 post racks are designed to be an effective solution for the telecommunications room or network row. Available in 7 foot or 8 foot tall, these racks allow maximum equipment utilization for areas with either low or high ceilings. The rack can be used to manage high performance copper and fiber patch cables. This modular rack system is compatible with Panduit horizontal and vertical cable managers.

The open design allows for maximum airflow in and around the rack. This 4 post rack system is part of a complete rack and cable management system that manages, protects, and showcases your network investment.

Part Number	Description	Std. Pkg. Qty.	Std. Ctn. Qty.
<b>ER4P23</b>	4 post EIA rack with #12-24 threaded rails. Dimensions: 84.0"H x 20.3"W x 23.0"D (2134mm x 515mm x 584mm).	1	—
<b>R2PS</b>	19" EIA rack, steel. Dimensions: 84.0"H x 20.3"W x 3.0"D (2134mm x 514mm x 76mm).	1	—

### Cabinet Accessories

As the demand for system performance increases, it becomes essential to protect and manage cables.

- Innovative designs offer unobstructed access to network cabling for easier moves, adds and changes
- Curved surfaces maintain cable bend radius
- Lightweight plastic construction provides durability and easy installation

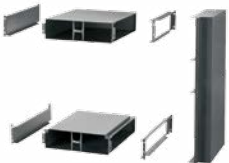
#### In-Cabinet Ducting



CDE1



CDE2 - code TBC



CNLTD142A3



DERLCC7009A

Part Number	Description	Std. Pkg. Qty.	Std. Ctn. Qty.
CDE1	Cabinet air inlet duct for 1 RU Cisco^ 4948 switch. Net-Direct™ Air Inlet Duct, 1 RU that resides below the switch provides cold aisle airflow to Cisco^ 4948, 4928, and 4924. Optimized for use in server cabinet applications.	1	—
CDE2	Cabinet air inlet duct for 2 RU Cisco^ Nexus N2K switches. Net-Direct™ Air inlet Duct, 2 RU that resides in-line and below switch provides cold aisle airflow to Cisco^ Nexus N2K-C2148T-1GE, N2K-C2248TP-1GE, and N2K-C2232PP-10GE fabric extenders and Cisco^ WS-C4948E-F, WS-C4948E-F-S, and WS-C4948E-F-E. Optimized for use in server cabinet applications.	1	—
CNLTD142A3	Net-direct cabinet inlet duct for Cisco^ Nexus 7009 switch. Net-Direct™ Air Inlet Duct designed for Cisco^ Nexus 7009 switch. Consists of 3 RU top and 3 RU bottom inlet ducts and a side duct.	1	—
DERLCC7009A	Exhaust duct for Cisco^ 7009 switch used with Net-Access™ N-Type 1070mm Wide Cabinet. Net-Direct™ Air Exhaust Duct for Net-Access™ N-Type 1070mm Depth Cabinets. Designed for Cisco^ 7009 Switch.	1	—

#### Finger Kits



SN15F

Part Number	Description	Std. Pkg. Qty.	Std. Ctn. Qty.
SN15F	42 and 45 RU finger kit, 1070mm, Net-Access™ S and N-Type Cabinet 100mm depth finger kit. 42 and 45 RU Finger Kit 1070mm. Net-Access™ S and N -Type Cabinet 100mm Depth Finger Kit.	1	—

^Cisco is a registered trademark of Cisco Technology, Inc.

## Fibre Slack Manager

Part Number	Description	Std. Pkg. Qty.	Std. Ctn. Qty.
PCFSM	Pre-configured cabinet fibre slack manager.	1	10

## NetRunner™ Vertical Cable Managers



WMPVF45E

Part Number	Description	Std. Pkg. Qty.	Std. Ctn. Qty.
WMPV45E	NetRunner™ Vertical Cable Manager, front and rear, 45 RU. Dimensions: 83.0"H x 4.9"W x 12.0"D (2108mm x 125mm x 306mm)	1	—
WMPVF45E	NetRunner™ Vertical Cable Manager, front only, 45 RU. Dimensions: 83.0"H x 4.9"W x 6.5"D (2108mm x 125mm x 165mm)	1	—
WMPVHC45E	NetRunner™ Vertical Cable Manager, front and rear, 45 RU. Dimensions: 83.0"H x 6.7"W x 14.1"D (2108mm x 170mm x 357mm)	1	—
WMPVHCF45E	NetRunner™ Vertical Cable Manager, front only, 45 RU. Dimensions: 83.0"H x 6.7"W x 7.6"D (2108mm x 170mm x 192mm)	1	—

## Vertical Patch Brackets



S7VPPB



SN8VPPB

Part Number	Description	Std. Pkg. Qty.	Std. Ctn. Qty.
S7VPPB	Zero RU vertical patch bracket for S-Type 700mm wide cabinet. Vertical patching bracket for S-Type 700mm wide cabinets.	1	10
SN8VPPB	Zero RU vertical patch bracket for S-type and N-type 800mm wide cabinet. Vertical patching bracket for 800mm wide S-Type and N-Type Cabinets.	1	10





### PatchLink™ Horizontal Cable Managers



**WMP1E**



**WMPF1E**



**WMPFSE**



**WMPH2E**



**WMPHF2E**



**WMPLFSE**

Part Number	Description	Std. Pkg. Qty.	Std. Ctn. Qty.
<b>WMP1E</b>	Horizontal cable manager, front and rear, 2 RU. 3.5"H x 19.0"W x 8.9"D (89mm x 483mm x 226mm).	1	—
<b>WMPF1E</b>	Horizontal cable manager, front only, 2 RU. 3.5"H x 19.0"W x 3.7"D (89mm x 483mm x 94mm).	1	—
<b>WMPFSE</b>	Horizontal cable manager, front only, 1 RU. 1.7"H x 19.0"W x 3.7"D (44mm x 483mm x 94mm).	1	—
<b>WMPH2E</b>	Horizontal cable manager, front and rear, 2 RU. 3.5"H x 20.2"W x 8.9"D (89mm x 513mm x 226mm). Includes extended front covers and two bend radius clips.	1	—
<b>WMPHF2E</b>	Horizontal cable manager, front only, 2 RU. 3.5"H x 20.2"W x 3.7"D (89mm x 513mm x 94mm). Includes extended front covers and two bend radius clips.	1	—
<b>WMPLFSE</b>	Horizontal cable manager, front only, 1 RU. 1.7"H x 19.0"W x 2.7"D (44mm x 483mm x 69mm).	1	—
<b>WMPLSE</b>	Horizontal cable manager, front only, 1 RU. 1.7"H x 19.0"W x 7.9"D (44mm x 483mm x 200mm).	1	—
<b>WMPSE</b>	Horizontal cable manager, front and rear, 1 RU. 1.7"H x 19.0"W x 8.9"D (44mm x 483mm x 226mm).	1	—



**WMPLSE**



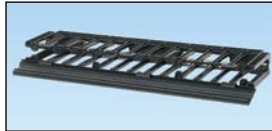
**WMPSE**



## NetManager™ High Capacity Horizontal Cable Managers



NM1



NMF1



NM1



NMF1

Part Number	Description	Std. Pkg. Qty.	Std. Ctn. Qty.
<b>NM1</b>	Horizontal cable manager, high capacity, front and rear 1 rack unit. 1.7"H x 19.0"W x 13.1"D (44mm x 482mm x 332mm).	1	—
<b>NMF1</b>	Horizontal cable manager, high capacity, front only 1 rack unit. 1.7"H x 19.0"W x 6.2"D (44mm x 482mm x 157mm).	1	—
<b>NMF2</b>	Horizontal cable manager, high capacity, front only 2 rack units. 3.5"H x 19.0"W x 6.2"D (88mm x 482mm x 157mm).	1	—
<b>NMF3</b>	Horizontal cable manager, high capacity, front only 3 rack units. 5.2"H x 19.0"W x 6.2"D (133mm x 482mm x 157mm).	1	—

## NetManager™ Horizontal Cable Managers



NCMHF1



NCMHF2

Part Number	Description	Std. Pkg. Qty.	Std. Ctn. Qty.
<b>NCMHF1</b>	Horizontal cable manager, front only, 1RU. 1.7"H x 19.0"W x 3.7"D (44mm x 483mm x 95mm).	1	—
<b>NCMHF2</b>	Horizontal cable manager, front only, 2 RU. 3.5"H x 19.0"W x 3.7"D (88mm x 483mm x 95mm).	1	—

## Open-Access™ Horizontal Cable Managers



CMPHF1



CMPHF1



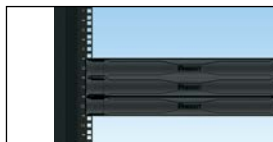
CMPHH2

Part Number	Description	Std. Pkg. Qty.	Std. Ctn. Qty.
<b>CMPHF1</b>	Horizontal panel d-rings, front only, 1 RU. D-rings installed on panel. 1.7"H x 19.0"W x 3.4"D (44mm x 483mm x 87mm).	1	—
<b>CMPHH2</b>	Horizontal panel d-rings, front only, 2 RU. D-rings installed on panel. 3.5"H x 19.0"W x 5.7"D (88mm x 483mm x 144mm).	1	—
<b>CMPHHF1</b>	Horizontal panel d-rings, front only, 1 RU. D-rings installed on panel. 1.7"H x 19.0"W x 5.7"D (44mm x 483mm x 144mm).	1	—
<b>MPH1C</b>	Horizontal panel d-ring replacement cover.	1	10

### Blanking Shades



FLBSIM-Y



TLBP1S-V

Part Number	Description	Std. Pkg. Qty.	Std. Ctn. Qty.
FLBSIM-Y	Adjustable, easy install; for Net-Access™ Cabinets, blank top-bottom racks – TLBP1S-V. Full-length blanking shade blanks out 4-45 consecutive rack units on standard 19.00" (482.6mm) wide vertical mounting rails; black. When used with Panduit Net Access Cabinets, the top and bottom rack units must be blanked with standard Tool-less Blanking Panel (TLBP1S-V).	1	—
TLBP1S-V	Tool-less blanking panel, 1 rack unit, square hole. 19" (483mm) width for 3/8" cage nut holes (may be used with or without cage nuts installed). 1 RU.	5	—

### Raised Floor Air Sealing Grommet



CTG3X8



RFG6X8Y

Part Number	Description	Std. Pkg. Qty.	Std. Ctn. Qty.
CTG3X8	CoolBoot™ Cabinet Top Air Sealing Fitting. Used to seal off 3" x 8" cabinet top openings when cables are routed through the top of a cabinet. Airtight fabric and Ultra-Cinch™ Tie closes top of fabric, minimizing hot air bypass around cables to improve cooling of network equipment and reduce energy costs. For use with both Net-SERV® and Net-Access™ Cabinets. Requires cabinet top cable protection bezel to be installed.	1	10
RFG10X8Y	Raised floor air sealing grommet. Overall size of 10" x 8" (254.0mm x 203.2mm) allows for 8.2" x 6.2" (208.3mm x 157.5mm) capacity.	1	10
RFG6X8Y	Raised floor air sealing grommet. Overall size of 6" x 8" (152.4mm x 203.2mm) allows for 4.2" x 6.2" (106.7mm x 157.5mm) capacity.	1	10





## Zone Cabling

PanZone™ Wireless Enclosures provide an additional level of security for your wireless LAN by protecting wireless access points from tampering, vandalism, theft and harsh environments. In addition, Panduit's expertise in network infrastructure provides peace of mind that your wireless network will transition seamlessly onto your wired network.

### PanZone™ Wireless Access Point Enclosures



**PZWA125**



**PZWA13**



**PZWC35I**



**PZWWB**

Part Number	Description	Std. Pkg. Qty.	Std. Ctn. Qty.
<b>PZWA125</b>	PanZone® Wireless Access Point Enclosure; accommodates Aruba 92, 93, 104, 105, 124, and 125 series Wireless Access Points. UL 2043 rated. Dimensions: 12.00"H x 12.00"W x 2.31"D (305mm x 305mm x 59mm).	1	—
<b>PZWA135</b>	PanZone® Wireless Access Point Enclosure; accommodates Aruba 135 series Wireless Access Points. UL 2043 rated. Dimensions: 12.00"H x 12.00"W x 2.31"D (305mm x 305mm x 59mm).	1	—
<b>PZWC35</b>	PanZone® Wireless Access Point Enclosure for surface mount or for use in suspended ceilings with optional in-ceiling mounting bracket. Accommodates Cisco Aironet® 1140 and 3500 Series Wireless Access Points. UL 2043 rated.  Dimensions: 13.75"H x 12.0"W x 3.1"D (349.8mm x 304.8mm x 78mm)	1	—
<b>PZWC35I</b>	PanZone® Wireless Access Point Enclosure; accommodates Cisco Aironet® 1140 and 3500 Series Wireless Access Points. UL 2043 rated.  Dimensions: 23.8"H x 23.8"W x 3.1"D (603mm x 603mm x 78mm).	1	—
<b>PZWWB</b>	PanZone® Wall Mount Bracket for PZWA125 and PZW135 Enclosures. Dimensions: 4.1"H x 15.0"W x 16.4"D (104mm x 381 x 417mm)	1	—

### PanZone™ Wireless Access Point Enclosures Accessories



**PZWIFIDCB**

Part Number	Description	Std. Pkg. Qty.	Std. Ctn. Qty.
<b>PZWIFIDCB</b>	PanZone® Wireless Enclosure In-Ceiling Mounting Bracket Kit for PZWIFIEN, PZWIFIENA, PZWIFIED, PZWIFIEA and PZWIFIEH.  Dimensions: 4.06"H x 13.73"W x .81"D (103.1mm x 348.7mm x 20.6mm).	1	—

### Consolidation Point Boxes

The consolidation point box is designed to work with SMED NEXUS™ Under Floor Systems as a consolidation point, although it is also suitable for other under floor systems with a minimum depth of 41.90cm. The box can also be wall mounted vertically or horizontally as a consolidation point. Consolidation point boxes save time and money by reducing the amount of time required to complete moves, adds and changes.



**CUFMB24BL**

Part Number	Description	Std. Pkg. Qty.	Std. Ctn. Qty.
<b>CUFMB24BL</b>	24-port aluminum underfloor consolidation point box includes pre-printed numbered labels with writable surface on back when pre-numbered labels are not applicable.  Dimensions: 1.69"H x 10.85"W x 10.67"L (42.9mm x 275.6mm x 271.0mm).	1	—

### PanZone™ Overhead Distribution Racks

The PanZone™ Overhead Distribution Rack is designed to add useable rack units above a rack/cabinet to maximize real estate utilization. It enables the deployment of zone distribution areas within the data center for greater scalability and quicker server deployments. This is accomplished by pre-cabling to the overhead rack in the initial build out and simply installing patch cords to connect to newly deployed servers.



**PZLRB2U**



**PZLRB4U**



**PZLRB6U**

Part Number	Description	Std. Pkg. Qty.	Std. Ctn. Qty.
<b>PZLRB2U</b>	2 RU ladder rack bracket. Bracket fits Wyr-Grid® Overhead Cable Tray. Dimensions: 8.75"H x 20.26"W x 3.26"D (222.3mm x 514.6mm x 82.8mm)	1	—
<b>PZLRB4U</b>	4 RU ladder rack bracket. Bracket fits Wyr-Grid® Overhead Cable Tray.  Dimensions: 12.25"H x 20.26"W x 3.26"D (311.2mm x 514.6mm x 82.8mm)	1	—
<b>PZLRB6U</b>	4 RU ladder rack bracket. Bracket fits Wyr-Grid® Overhead Cable Tray.  Dimensions: 12.25"H x 20.26"W x 3.26"D (311.2mm x 514.6mm x 82.8mm)	1	—



## Pre-Terminated Solutions

- Allow 70% quicker network deployment compared to field-terminated installations without the cable and packaging waste associated by site terminated solutions
- 100% performance tested of individual connections to electrical permanent link specifications
- With fibre there are three choices of cassette attenuation guaranteed to support unique cable lengths in the industry

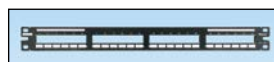
### QuickNet™ Patch Panels



**QAPP24BL**



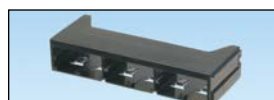
**QAPP48HDBL**



**QPP24BL**



**QPP48HDBL**



**QPPABL**



**QPPBBL**



**QSP48HDBL**

Part Number	Description	Std. Pkg. Qty.	Std. Ctn. Qty.
<b>QAPP24BL</b>	QuickNet™ Patch Panel, angled, 24-port, 1 RU. 24-port, angled patch panel which accepts QuickNet™ Pre-Terminated Cassettes and Patch Panel Adapters.	1	10
<b>QAPP48HDBL</b>	QuickNet™ Patch Panel, angled, 48-port, 1 RU. 48-port, angled patch panel which accepts QuickNet™ Pre-Terminated Cassettes and Patch Panel Adapters.	1	10
<b>QPP24BL</b>	QuickNet™ Patch Panel, flat, 24-port, 1RU. 24-port, patch panel which accepts QuickNet™ Pre-Terminated Cassettes and Patch Panel Adapters.	1	10
<b>QPP48HDBL</b>	QuickNet™ Patch Panel, flat, 48-port, 1RU. 48-port, patch panel which accepts QuickNet™ Pre-Terminated Cassettes and Patch Panel Adapters.	1	10
<b>QPPABL</b>	QuickNet™ Patch Panel Adapter which accepts Mini-Com® Modules for UTP, fiber optic, and audio/visual applications.	1	10
<b>QPPBBL</b>	QuickNet™ Patch Panel Blank reserves space for future use and promotes proper airflow and cooling. Use QPPLC24 for label/label cover.	1	10
<b>QSP48HDBL</b>	QuickNet™ All Metal High Density Patch Panel, flat, 48-port, 1 RU. All metal patch panel which accepts QuickNet™ Pre-Terminated Shielded Cassettes and Patch Panel Adapters.	1	10

### Fibre QuickNet™



**FCE1U**



**FCXO-24-10Y**



**FD1W\*AQDLC**



**FD1W24BUDLCZ**

Part Number	Description	Std. Pkg. Qty.	Std. Ctn. Qty.
<b>FCE1U</b>	Holds up to four QuickNet™ Cassettes, FAP adapter panels, or FOSM splice modules. Dimensions: 1.73"H x 17.60"W x 16.30"D (43.9mm x 447.0mm x 414.0mm).	1	—
<b>FCXO-24-10Y</b>	24-fiber cassette optimized OM3 50µm 12 duplex LC to 2 MPOs Standard Method A. Optimized OM3 10Gig 50/125µm twelve LC duplex adapters to two male 12-fiber pre-terminated MTP*connectors.	1	10
<b>FD1W12AQDLC</b>	Opticom™ Pre-Loaded Fibre Drawer with 12 duplex 50µm LC adapters. Pre-loaded Fibre drawer with 12 Duplex 50µm LC Adapters , Aqua,Zirconia Ceramic Split Sleeves	1	—
<b>FD1W24AQDLC</b>	Opticom™ Pre-Loaded Fibre Drawer with 24 duplex 50µm LC adapters. Pre-loaded Fibre drawer with 24 Duplex 50µm LC Adapters , Aqua, Zirconia Ceramic Split Sleeve.	1	—
<b>FD1W24BUDLCZ</b>	Pre-loaded fibre drawer with 24 duplex SM OS1/OS2 (9µm) LC adapters (zirconia sleeve). Pre-loaded with 24 LC duplex blue adapters (zirconia sleeve) for OS1/OS2 (9µm) singlemode fiber. Dimensions: 1.73"H x 17.5"W x 12.0"D(43.9mm x 444.5mm x 308.2mm)	1	—



## High Speed Data Transport Connectivity

- Designed for ease of server deployment with Top of Rack (ToR) and End of Row (EoR) switch
- Panduit passive solutions certified by Cisco
- Thinnest cable in the market, with half meter lengths non air blocking up to 7 meters and then in one meter increments to 15 meters giving greater flexibility in implementation
- Available in Blue, White and Black for easy identification of multiple networks and fabrics

### SFP+ 10Gig Direct Attach Active Copper Cable Assembly

These active SFP+ copper cable assemblies contain low power circuitry in the connector to boost the signal and are driven from the port without additional power requirements. They provide a low cost alternative to optical transceivers, and are generally used for end of row or middle of row data center architectures for interconnect distances of up to 15 meters.



PSF1AXD10MBU



PSF1AXD10MWH

Part Number	Description	Std. Pkg. Len.	Std. Ctn. Col.
PSF1AXD7MBL	SFP+ 10Gig direct attach active copper cable assembly, Black, 7m. High speed active twinaxial cable assembly with SFP+ 10 Gb/s hot pluggable, modular connectors on each end.	7m	Black
PSF1AXD7MBU	SFP+ 10Gig direct attach active copper cable assembly, Blue, 7m. High speed active twinaxial cable assembly with SFP+ 10 Gb/s hot pluggable, modular connectors on each end.	7m	Blue
PSF1AXD7MWH	SFP+ 10Gig direct attach active copper cable assembly, White, 7m. High speed active twinaxial cable assembly with SFP+ 10 Gb/s hot pluggable, modular connectors on each end.	7m	White
PSF1AXD8MBL	SFP+ 10Gig direct attach active copper cable assembly, Black, 8m. High speed active twinaxial cable assembly with SFP+ 10 Gb/s hot pluggable, modular connectors on each end.	8m	Black
PSF1AXD8MBU	SFP+ 10Gig direct attach active copper cable assembly, Blue, 8m. High speed active twinaxial cable assembly with SFP+ 10 Gb/s hot pluggable, modular connectors on each end.	8m	Blue
PSF1AXD8MWH	SFP+ 10Gig direct attach active copper cable assembly, White, 8m. High speed active twinaxial cable assembly with SFP+ 10 Gb/s hot pluggable, modular connectors on each end.	8m	White
PSF1AXD9MBL	SFP+ 10Gig direct attach active copper cable assembly, Black, 9m. High speed active twinaxial cable assembly with SFP+ 10 Gb/s hot pluggable, modular connectors on each end.	9m	Black
PSF1AXD9MBU	SFP+ 10Gig direct attach active copper cable assembly, Blue, 9m. High speed active twinaxial cable assembly with SFP+ 10 Gb/s hot pluggable, modular connectors on each end.	9m	Blue
PSF1AXD9MWH	SFP+ 10Gig direct attach active copper cable assembly White, 9m. High speed active twinaxial cable assembly with SFP+ 10 Gb/s hot pluggable, modular connectors on each end.	9m	White
PSF1AXD10MBL	SFP+ 10Gig direct attach active copper cable assembly, Black, 10m. High speed active twinaxial cable assembly with SFP+ 10 Gb/s hot pluggable, modular connectors on each end.	10m	Black
PSF1AXD10MBU	SFP+ 10Gig direct attach active copper cable assembly, Blue, 10m. High speed active twinaxial cable assembly with SFP+ 10 Gb/s hot pluggable, modular connectors on each end.	10m	Blue
PSF1AXD10MWH	SFP+ 10Gig direct attach active copper cable assembly, White, 10m. High speed active twinaxial cable assembly with SFP+ 10 Gb/s hot pluggable, modular connectors on each end.	10m	White
PSF1AXD11MBL	SFP+ 10Gig direct attach active copper cable assembly, Black, 11m. High speed active twinaxial cable assembly with SFP+ 10 Gb/s hot pluggable, modular connectors on each end.	11m	Black
PSF1AXD11MBU	SFP+ 10Gig direct attach active copper cable assembly, Blue, 11m. High speed active twinaxial cable assembly with SFP+ 10 Gb/s hot pluggable, modular connectors on each end.	11m	Blue

Standard package quantity is 1. Standard carton quantity is 10.

Available in Red (replace last 2 letters in part number with RD) and Green (replace last 2 letters in part number with GR)

Order number of parts required in multiples of Standard Package Quantity.

**SFP+ 10Gig Direct Attach Active Copper Cable Assembly continued...**

Part Number	Description	Std. Pkg. Len.	Std. Ctn. Col.
<b>PSF1AXD11MWH</b>	SFP+ 10Gig direct attach active copper cable assembly, White, 11m. High speed twinaxial cable assembly with SFP+ 10 Gb/s hot pluggable, modular connectors on each end.	11m	White
<b>PSF1AXD12MBL</b>	SFP+ 10Gig direct attach active copper cable assembly, Black, 12m. High speed active twinaxial cable assembly with SFP+ 10 Gb/s hot pluggable, modular connectors on each end.	12m	Black
<b>PSF1AXD12MBU</b>	SFP+ 10Gig direct attach active copper cable assembly, Blue, 12m. High speed active twinaxial cable assembly with SFP+ 10 Gb/s hot pluggable, modular connectors on each end.	12m	Blue
<b>PSF1AXD12MWH</b>	SFP+ 10Gig direct attach active copper cable assembly, White, 12m. High speed twinaxial cable assembly with SFP+ 10 Gb/s hot pluggable, modular connectors on each end.	12m	White
<b>PSF1AXD13MBL</b>	SFP+ 10Gig direct attach active copper cable assembly, Black, 13m. High speed active twinaxial cable assembly with SFP+ 10 Gb/s hot pluggable, modular connectors on each end.	13m	Black
<b>PSF1AXD13MWH</b>	SFP+ 10Gig direct attach active copper cable assembly, White, 13m. High speed twinaxial cable assembly with SFP+ 10 Gb/s hot pluggable, modular connectors on each end.	13m	White
<b>PSF1AXD14MBL</b>	SFP+ 10Gig direct attach active copper cable assembly, Black, 14m. High speed active twinaxial cable assembly with SFP+ 10 Gb/s hot pluggable, modular connectors on each end.	14m	Black
<b>PSF1AXD14MWH</b>	SFP+ 10Gig direct attach active copper cable assembly, White, 14m. High speed active twinaxial cable assembly with SFP+ 10 Gb/s hot pluggable, modular connectors on each end.	14m	White
<b>PSF1AXD15MBL</b>	SFP+ 10Gig direct attach active copper cable assembly, Black, 15m. High speed active twinaxial cable assembly with SFP+ 10 Gb/s hot pluggable, modular connectors on each end.	15m	Black

Standard package quantity is 1. Standard carton quantity is 10.



### SFP+ 10Gig Direct Attach Passive Copper Cable Assembly

By incorporating 10Gig™ SFP+ Direct Attach Passive Copper Cable Assemblies into the physical infrastructure, businesses can achieve 10 Gigabit performance port-to-port without additional signal processing or conversion, providing a low power, low latency 10 Gb/s server interconnect option for top of rack switching applications.



**PSF1PXA0.5MBU**



**PSF1PXA1.5MBU**



**PSF1PXA3.5MBL**



**PSF1PXA3.5MBU**

Part Number	Description	Std. Pkg. Len.	Std. Ctn. Col.
<b>PSF1PXA0.5MBL</b>	SFP+ 10Gig direct attach passive copper cable assembly, Black, 0.5m. High speed twinaxial cable assembly with SFP+ 10Gbps hot pluggable modular connectors on each end.	0.5m	Black
<b>PSF1PXA0.5MBU</b>	SFP+ 10Gig direct attach passive copper cable assembly, Blue, 0.5m. High speed twinaxial cable assembly with SFP+ 10Gbps hot pluggable modular connectors on each end.	0.5m	Blue
<b>PSF1PXA1.5MBL</b>	SFP+ 10Gig direct attach passive copper cable assembly, Black, 1.5m. High speed twinaxial cable assembly with SFP+ 10Gbps hot pluggable modular connectors on each end.	1.5m	Black
<b>PSF1PXA1.5MBU</b>	SFP+ 10Gig direct attach passive copper cable assembly, Blue, 1.5m. High speed twinaxial cable assembly with SFP+ 10Gbps hot pluggable modular connectors on each end.	1.5m	Blue
<b>PSF1PXA1.5MWH</b>	SFP+ 10Gig direct attach passive copper cable assembly, White, 1.5m. High speed twinaxial cable assembly with SFP+ 10Gbps hot pluggable modular connectors on each end.	1.5m	White
<b>PSF1PXA1MBL</b>	SFP+ 10Gig direct attach passive copper cable assembly, Black, 1m. High speed twinaxial cable assembly with SFP+ 10Gbps hot pluggable modular connectors on each end.	1m	Black
<b>PSF1PXA1MBU</b>	SFP+ 10Gig direct attach passive copper cable assembly, Blue, 1m. High speed twinaxial cable assembly with SFP+ 10Gbps hot pluggable modular connectors on each end.	1m	Blue
<b>PSF1PXA1MWH</b>	SFP+ 10Gig direct attach passive copper cable assembly, White, 1m. High speed twinaxial cable assembly with SFP+ 10Gbps hot pluggable modular connectors on each end.	1m	White
<b>PSF1PXA2.5MBL</b>	SFP+ 10Gig direct attach passive copper cable assembly, Black, 2.5m. High speed twinaxial cable assembly with SFP+ 10Gbps hot pluggable modular connectors on each end.	2.5m	Black
<b>PSF1PXA2.5MBU</b>	SFP+ 10Gig direct attach passive copper cable assembly, Blue, 2.5m. High speed twinaxial cable assembly with SFP+ 10Gbps hot pluggable modular connectors on each end.	2.5m	Blue
<b>PSF1PXA2MBL</b>	SFP+ 10Gig direct attach passive copper cable assembly, Black, 2m. High speed twinaxial cable assembly with SFP+ 10Gbps hot pluggable modular connectors on each end.	2m	Black
<b>PSF1PXA2MBU</b>	SFP+ 10Gig direct attach passive copper cable assembly, Blue, 2m. High speed twinaxial cable assembly with SFP+ 10Gbps hot pluggable modular connectors on each end.	2m	Blue
<b>PSF1PXA3.5MBL</b>	SFP+ 10Gig direct attach passive copper cable assembly, Black, 3.5m. High speed twinaxial cable assembly with SFP+ 10Gbps hot pluggable modular connectors on each end.	3.5m	Black
<b>PSF1PXA3.5MBU</b>	SFP+ 10Gig direct attach passive copper cable assembly, Blue, 3.5m. High speed twinaxial cable assembly with SFP+ 10Gbps hot pluggable modular connectors on each end.	3.5m	Blue
<b>PSF1PXA3MBL</b>	SFP+ 10Gig direct attach passive copper cable assembly, Black, 3m. High speed twinaxial cable assembly with SFP+ 10Gbps hot pluggable modular connectors on each end.	3m	Black
<b>PSF1PXA3MBU</b>	SFP+ 10Gig direct attach passive copper cable assembly, Blue, 3m. High speed twinaxial cable assembly with SFP+ 10Gbps hot pluggable modular connectors on each end.	3m	Blue
<b>PSF1PXA3MWH</b>	SFP+ 10Gig direct attach passive copper cable assembly, White, 3m. High speed twinaxial cable assembly with SFP+ 10Gbps hot pluggable modular connectors on each end.	3m	White

Standard package quantity is 1. Standard carton quantity is 10.



**SFP+ 10Gig Direct Attach Passive Copper Cable Assembly continued...**

Part Number	Description	Std. Pkg. Len.	Std. Ctn. Col.
<b>PSF1PXD4MBL</b>	SFP+ 10Gig direct attach passive copper cable assembly, Black, 4m. High speed twinaxial cable assembly with SFP+ 10Gbps hot pluggable modular connectors on each end.	4m	Black
<b>PSF1PXD4MBU</b>	SFP+ 10Gig direct attach passive copper cable assembly, Blue, 4m. High speed twinaxial cable assembly with SFP+ 10Gbps hot pluggable modular connectors on each end.	4m	Blue
<b>PSF1PXD4.5MBL</b>	SFP+ 10Gig direct attach passive copper cable assembly, Black, 4.5m. High speed twinaxial cable assembly with SFP+ 10Gbps hot pluggable modular connectors on each end.	4.5m	Black
<b>PSF1PXD4.5MBU</b>	SFP+ 10Gig direct attach passive copper cable assembly, Blue, 4.5m. High speed twinaxial cable assembly with SFP+ 10Gbps hot pluggable modular connectors on each end.	4.5m	Blue
<b>PSF1PXD4.5MWH</b>	SFP+ 10Gig direct attach passive copper cable assembly, White, 4.5m. High speed twinaxial cable assembly with SFP+ 10Gbps hot pluggable modular connectors on each end.	4.5m	White
<b>PSF1PXD5.5MBL</b>	SFP+ 10Gig direct attach passive copper cable assembly, Black, 5.5m. High speed twinaxial cable assembly with SFP+ 10Gbps hot pluggable modular connectors on each end.	5.5m	Black
<b>PSF1PXD5.5MWH</b>	SFP+ 10Gig direct attach passive copper cable assembly, White, 5.5m. High speed twinaxial cable assembly with SFP+ 10Gbps hot pluggable modular connectors on each end.	5.5m	White
<b>PSF1PXD5MBL</b>	SFP+ 10Gig direct attach passive copper cable assembly, Black, 5m. High speed twinaxial cable assembly with SFP+ 10Gbps hot pluggable modular connectors on each end.	5m	Black
<b>PSF1PXD5MBU</b>	SFP+ 10Gig direct attach passive copper cable assembly, Blue, 5m. High speed twinaxial cable assembly with SFP+ 10Gbps hot pluggable modular connectors on each end.	5m	Blue
<b>PSF1PXD5MWH</b>	SFP+ 10Gig direct attach passive copper cable assembly, White, 5m. High speed twinaxial cable assembly with SFP+ 10Gbps hot pluggable modular connectors on each end.	5m	White
<b>PSF1PXD6.5MBL</b>	SFP+ 10Gig direct attach passive copper cable assembly, Black, 6.5m. High speed twinaxial cable assembly with SFP+ 10Gbps hot pluggable modular connectors on each end.	6.5m	Black
<b>PSF1PXD6.5MWH</b>	SFP+ 10Gig direct attach passive copper cable assembly, White, 6.5m. High speed twinaxial cable assembly with SFP+ 10Gbps hot pluggable modular connectors on each end.	6.5m	White
<b>PSF1PXD6MBL</b>	SFP+ 10Gig direct attach passive copper cable assembly, Black, 6m. High speed twinaxial cable assembly with SFP+ 10Gbps hot pluggable modular connectors on each end.	6m	Black
<b>PSF1PXD6MWH</b>	SFP+ 10Gig direct attach passive copper cable assembly, White, 6m. High speed twinaxial cable assembly with SFP+ 10Gbps hot pluggable modular connectors on each end.	6m	White
<b>PSF1PXD7MBL</b>	SFP+ 10Gig direct attach passive copper cable assembly, Black, 7m. High speed twinaxial cable assembly with SFP+ 10Gbps hot pluggable modular connectors on each end.	7m	Black

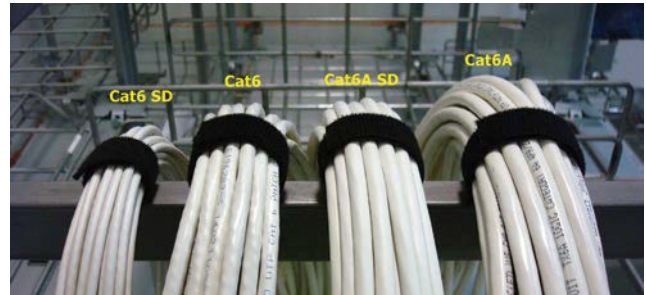


Standard package quantity is 1.  
Standard carton quantity is 10.

### Copper Connectivity-Patch Cords

Panduit offers the most extensive collection of patch cords available to meet any of your deployment needs. All cords are 100% tested for performance and feature a patented tangle free latch. In addition to our standard unshielded and shielded offerings for Cat 5E, Cat 6, and Cat 6A, Panduit goes beyond standards to also offer small diameter patch cords for Cat 6 and Cat 6A installations. These cords have significantly smaller cable diameters than typical Category 6 and 6A offerings, and have a minimal impact of shortening the maximum channel length by only a few metres.

- Patented tangle-free latch provides non snagging easy release, saving time on moves, adds, and changes
- Multiple colours enable engineers to identify critical services by sight



- Small diameter cables result in improved cable flexibility, easier cable management, optimal airflow, reduced cable pathway fill, and potentially lower operating costs.

#### Shielded, Category 6A



STP6X1MIG



STP6X1MBU

Part Number	Description	Std. Pkg. Len.	Std. Ctn. Col.
STP6X1MBU	Copper Patch Cord, Category 6A, Blue S/FTP Cable, 1m. 10 Gb/s S/FTP patch cord with TX6A™ 10Gig™ Modular Plugs on each end.	1m	Blue
STP6X1MIG	Copper Patch Cord, Category 6A, Intl Gray S/FTP Cable, 1m. 10 Gb/s S/FTP patch cord with TX6A™ 10Gig™ Modular Plugs on each end.	1m	Intl Grey
STP6X2MBU	Copper Patch Cord, Category 6A, Blue S/FTP Cable, 2m. 10 Gb/s S/FTP patch cord with TX6A™ 10Gig™ Modular Plugs on each end.	2m	Blue
STP6X2MIG	Copper Patch Cord, Category 6A, Intl Gray S/FTP Cable, 2m. 10 Gb/s S/FTP patch cord with TX6A™ 10Gig™ Modular Plugs on each end.	2m	Intl Grey
STP6X3MBU	Copper Patch Cord, Category 6A, Blue S/FTP Cable, 3m. 0 Gb/s S/FTP patch cord with TX6A™ 10Gig™ Modular Plugs on each end.	3m	Blue
STP6X3MIG	Copper Patch Cord, Category 6A, Intl Gray S/FTP Cable, 3m. 10 Gb/s S/FTP patch cord with TX6A™ 10Gig™ Modular Plugs on each end.	3m	Intl Grey
STP6X5MBU	Copper Patch Cord, Category 6A, Blue S/FTP Cable, 5m. 10 Gb/s S/FTP patch cord with TX6A™ 10Gig™ Modular Plugs on each end.	5m	Blue
STP6X5MIG	Copper Patch Cord, Category 6A, Intl Gray S/FTP Cable, 5m. 10 Gb/s S/FTP patch cord with TX6A™ 10Gig™ Modular Plugs on each end.	5m	Intl Grey
STP6X10MBU	Copper Patch Cord, Category 6A, Blue S/FTP Cable, 10m. 10 Gb/s S/FTP patch cord with TX6A™ 10Gig™ Modular Plugs on each end.	10m	Blue
STP6X10MIG	Copper Patch Cord, Category 6A, Intl Gray S/FTP Cable, 10m. 10 Gb/s S/FTP patch cord with TX6A™ 10Gig™ Modular Plugs on each end.	10m	Intl Grey

#### Shielded, Category 5e



STPCH1MBBL

Part Number	Description	Std. Pkg. Len.	Std. Ctn. Col.
STPCH1MBBL	Copper patch cord, Category 5e, International Gray S/FTP cable, Black boots, 1m. Shielded patch cord with Pan-Plug® Shielded Modular Plugs on each end.	1m	Intl Grey
STPCH2MBBL	Copper patch cord, Category 5e, International Gray S/FTP cable, Black boots, 2m. Shielded patch cord with Pan-Plug® Shielded Modular Plugs on each end.	2m	Intl Grey
STPCH3MBBL	Copper patch cord, Category 5e, International Gray S/FTP cable, Black boots, 3m. Shielded patch cord with Pan-Plug® Shielded Modular Plugs on each end.	3m	Intl Grey
STPCH5MBBL	Copper patch cord, Category 5e, International Gray S/FTP cable, Black boots, 5m. Shielded patch cord with Pan-Plug® Shielded Modular Plugs on each end.	5m	Intl Grey

Standard package quantity is 1. Standard carton quantity is 10.

## Unshielded, Category 6, Small Diameter

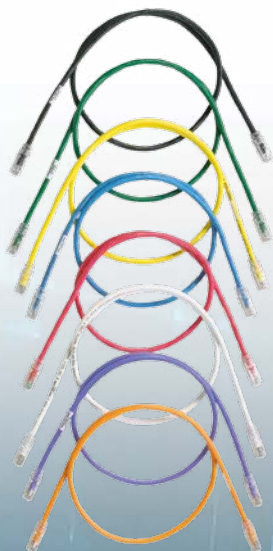
The main advantages of these patch cords are the 0.150 in. (3.8mm) nominal cable diameter that occupies less than half the space of traditional patch cords. This smaller diameter cable results in improved cable flexibility, easier cable management, optimal airflow, reduced cable pathway fill, and potentially lower operating costs.



UTP28SP1M

Part Number	Description	Std. Pkg. Len.	Std. Ctn. Col.
UTP28SP1M	Category 6 UTP 28AWG CM/LSZH cable assembly, Off White, 1m.	1m	Off White
UTP28SP1MBU	Category 6 UTP 28AWG CM/LSZH cable assembly, Blue, 1m.	1m	Blue
UTP28SP1MGR	Category 6 UTP 28AWG CM/LSZH cable assembly, Green, 1m.	1m	Green
UTP28SP1MVL	Category 6 UTP 28AWG CM/LSZH cable assembly, Violet, 1m.	1m	Violet
UTP28SP2M	Category 6 UTP 28AWG CM/LSZH cable assembly, Off White, 2m.	2m	Off White
UTP28SP2MBU	Category 6 UTP 28AWG CM/LSZH cable assembly, Blue, 2m.	2m	Blue
UTP28SP2MGR	Category 6 UTP 28AWG CM/LSZH cable assembly, Green, 2m.	2m	Green
UTP28SP2MVL	Category 6 UTP 28AWG CM/LSZH cable assembly, Violet, 2m.	2m	Violet
UTP28SP3M	Category 6 UTP 28AWG CM/LSZH cable assembly, Off White, 3m.	3m	Off White
UTP28SP3MBU	Category 6 UTP 28AWG CM/LSZH cable assembly, Blue, 3m.	3m	Blue
UTP28SP3MGR	Category 6 UTP 28AWG CM/LSZH cable assembly, Green, 3m.	3m	Green
UTP28SP3MVL	Category 6 UTP 28AWG CM/LSZH cable assembly, Violet, 3m.	3m	Violet
UTP28SP5M	Category 6 UTP 28AWG CM/LSZH cable assembly, Off White, 5m.	5m	Off White
UTP28SP5MBU	Category 6 UTP 28AWG CM/LSZH cable assembly, Blue, 5m.	5m	Blue
UTP28SP5MGR	Category 6 UTP 28AWG CM/LSZH cable assembly, Green, 5m.	5m	Green
UTP28SP5MVL	Category 6 UTP 28AWG CM/LSZH cable assembly, Violet, 5m.	5m	Violet

## Unshielded, Category 6A



Part Number	Description	Std. Pkg. Len.	Std. Ctn. Col.
UTP6A1M	Copper patch cord, Category 6A, Off White UTP cable, 1m. 10 Gb/s UTP patch cord with TX6A™ 10Gig™ Modular Plugs on each end.	1m	Off White
UTP6A1MBU	Copper patch cord, Category 6A, Blue UTP cable, 1m. 10 Gb/s UTP patch cord with TX6A™ 10Gig™ Modular Plugs on each end.	1m	Blue
UTP6A2M	Copper patch cord, Category 6A, Off White UTP cable, 2m. , 10 Gb/s UTP patch cord with TX6A™ 10Gig™ Modular Plugs on each end.	2m	Off White
UTP6A2MBU	Copper patch cord, Category 6A, Blue UTP cable, 2m. 10 Gb/s UTP patch cord with TX6A™ 10Gig™ Modular Plugs on each end.	2m	Blue
UTP6A3M	Copper patch cord, Category 6A, Off White UTP cable, 3m. 10 Gb/s UTP patch cord with TX6A™ 10Gig™ Modular Plugs on each end.	3m	Off White
UTP6A3MBU	Copper patch cord, Category 6A, Blue UTP cable, 3m. 10 Gb/s UTP patch cord with TX6A™ 10Gig™ Modular Plugs on each end.	3m	Blue
UTP6A5M	Copper patch cord, Category 6A, Off White UTP cable, 5m. 10 Gb/s UTP patch cord with TX6A™ 10Gig™ Modular Plugs on each end.	5m	Off White
UTP6A5MBU	Copper patch cord, Category 6A, Blue UTP cable, 5m. 10 Gb/s UTP patch cord with TX6A™ 10Gig™ Modular Plugs on each end.	5m	Blue
UTP6A10M	Copper patch cord, Category 6A, Off White UTP cable, 10m. 10 Gb/s UTP patch cord with TX6A™ 10Gig™ Modular Plugs on each end.	10m	Off White
UTP6A10MBU	Copper patch cord, Category 6A, Blue UTP cable, 10m. 10 Gb/s UTP patch cord with TX6A™ 10Gig™ Modular Plugs on each end.	10m	Off White

Standard package quantity is 1. Standard carton quantity is 10.



### Unshielded, Category 6A, Small Diameter

The main advantages of these patch cords are the 0.150 in. (3.8mm) nominal cable diameter that occupies less than half the space of traditional patch cords. This smaller diameter cable results in improved cable flexibility, easier cable management, optimal airflow, reduced cable pathway fill, and potentially lower operating costs.



UTP6ASD3M



UTP6ASD3MBU

Part Number	Description	Std. Pkg. Len.	Std. Ctn. Col.
UTP6ASD1M	Copper patch cord, Category 6A (SD), Off White UTP cable, 1m. 10 Gb/s UTP patch cord with TX6A™ 10Gig™ Modular Plugs on each end.	1m	Off White
UTP6ASD1MBU	Copper patch cord, Category 6A (SD), Blue UTP cable, 1m. 10 Gb/s UTP patch cord with TX6A™ 10Gig™ Modular Plugs on each end.	1m	Blue
UTP6ASD2M	Copper patch cord, Category 6A (SD), Off White UTP cable, 2m. 10 Gb/s UTP patch cord with TX6A™ 10Gig™ Modular Plugs on each end.	2m	Off White
UTP6ASD2MBU	Copper patch cord, Category 6A (SD), Blue UTP cable, 2m. 10 Gb/s UTP patch cord with TX6A™ 10Gig™ Modular Plugs on each end.	2m	Blue
UTP6ASD3M	Copper patch cord, Category 6A (SD), Off White UTP cable, 3m. 10 Gb/s UTP patch cord with TX6A™ 10Gig™ Modular Plugs on each end.	3m	Off White
UTP6ASD3MBU	Copper patch cord, Category 6A (SD), Blue UTP cable, 3m. 10 Gb/s UTP patch cord with TX6A™ 10Gig™ Modular Plugs on each end.	3m	Blue
UTP6ASD5M	Copper patch cord, Category 6A (SD), Off White UTP cable, 5m. 10 Gb/s UTP patch cord with TX6A™ 10Gig™ Modular Plugs on each end.	5m	Off White
UTP6ASD5MBU	Copper patch cord, Category 6A (SD), Blue UTP cable, 5m. 10 Gb/s UTP patch cord with TX6A™ 10Gig™ Modular Plugs on each end.	5m	Blue
UTP6ASD10M	Copper patch cord, Category 6A (SD), Off White UTP cable, 10m. 10 Gb/s UTP patch cord with TX6A™ 10Gig™ Modular Plugs on each end.	10m	Off White
UTP6ASD10MBU	Copper patch cord, Category 6A (SD), Blue UTP cable, 10m. 10 Gb/s UTP patch cord with TX6A™ 10Gig™ Modular Plugs on each end.	10m	Blue

Standard package quantity is 1. Standard carton quantity is 10.

### Unshielded, Category 5e



UTPCH2MY

Part Number	Description	Std. Pkg. Len.	Std. Ctn. Col.
UTPCH1MRDY	Copper patch cord, Category 5e, Red UTP cable, 1m. UTP patch cord with Pan-Plug™ Modular Plugs on each end.	1m	Red
UTPCH1MY	Copper patch cord, Category 5e, Off White UTP cable, 1m. UTP patch cord with Pan-Plug™ Modular Plugs on each end.	1m	Off White
UTPCH2MY	Copper patch cord, Category 5e, Off White UTP cable, 2m. UTP patch cord with Pan-Plug™ Modular Plugs on each end.	2m	Off White
UTPCH3MBLY	Copper patch cord, Category 5e, Black UTP cable, 3m. UTP patch cord with Pan-Plug™ Modular Plugs on each end.	3m	Black
UTPCH3MRDY	Copper patch cord, Category 5e, Red UTP cable, 3m. UTP patch cord with Pan-Plug™ Modular Plugs on each end.	3m	Red
UTPCH3MY	Copper patch cord, Category 5e, Off White UTP cable, 3m. UTP patch cord with Pan-Plug™ Modular Plugs on each end.	3m	Off White
UTPCH3MYLY	Copper patch cord, Category 5e, Yellow UTP cable, 3m. UTP patch cord with Pan-Plug™ Modular Plugs on each end.	3m	Yellow
UTPCH5MY	Copper patch cord, Category 5e, Off White UTP cable, 5m. UTP patch cord with Pan-Plug™ Modular Plugs on each end.	5m	Off White
UTPCH10MRDY	Copper patch cord, Category 5e, Red UTP Cable, 10m. UTP patch cord with Pan-Plug™ Modular Plugs on each end.	10m	Red
UTPCH10MY	Copper patch cord, Category 5e, Off White UTP cable, 10m. UTP patch cord with Pan-Plug™ Modular Plugs on each end.	10m	Off White

Standard package quantity is 1. Standard carton quantity is 10.

## Unshielded, Category 6



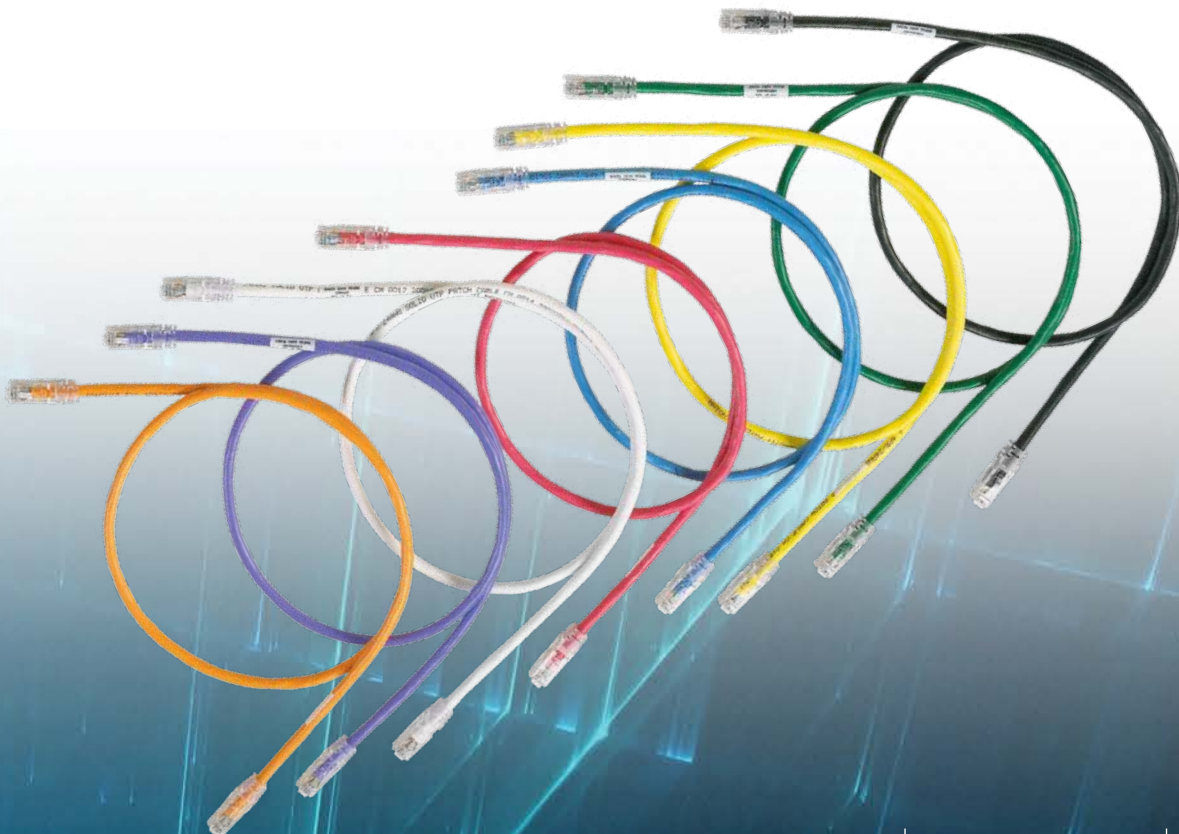
UTPSP3MBUY



UTPSP3MY

Part Number	Description	Std. Pkg. Len.	Std. Ctn. Col.
UTPSP1MBUY	Copper patch cord, Category 6, Blue UTP cable, 1m. UTP patch cord with TX6™ PLUS Modular Plugs on each end.	1m	Blue
UTPSP1MGRY	Copper patch cord, Category 6, Green UTP cable, 1m. UTP patch cord with TX6™ PLUS Modular Plugs on each end.	1m	Green
UTPSP1MRDY	Copper patch cord, Category 6, Red UTP cable, 1m. UTP patch cord with TX6™ PLUS Modular Plugs on each end.	1m	Red
UTPSP1MY	Copper patch cord, Category 6, Off White UTP cable, 1m. UTP patch cord with TX6™ PLUS Modular Plugs on each end.	1m	Off White
UTPSP2MBUY	Copper patch cord, Category 6, Blue UTP cable, 2m. UTP patch cord with TX6™ PLUS Modular Plugs on each end.	2m	Blue
UTPSP2MY	Copper patch cord, Category 6, Off White UTP cable, 2m. UTP patch cord with TX6™ PLUS Modular Plugs on each end.	2m	Off White
UTPSP3MBUY	Copper patch cord, Category 6, Blue UTP cable, 3m. UTP patch cord with TX6™ PLUS Modular Plugs on each end.	3m	Blue
UTPSP3MY	Copper patch cord, Category 6, Off White UTP cable, 3m. UTP patch cord with TX6™ PLUS Modular Plugs on each end.	3m	Off White
UTPSP5MBUY	Copper patch cord, Category 6, Blue UTP cable, 5m. UTP patch cord with TX6™ PLUS Modular Plugs on each end.	5m	Blue
UTPSP5MY	Copper patch cord, Category 6, Off White UTP cable, 5m. UTP patch cord with TX6™ PLUS Modular Plugs on each end.	5m	Off White
UTPSP10MBUY	Copper patch cord, Category 6, Blue UTP cable, 10m. UTP patch cord with TX6™ PLUS Modular Plugs on each end.	10m	Blue
UTPSP10MY	Copper patch cord, Category 6, Off White UTP cable, 10m. UTP patch cord with TX6™ PLUS Modular Plugs on each end.	10m	Off White

Standard package quantity is 1. Standard carton quantity is 10.

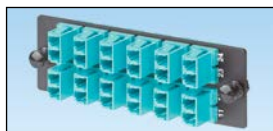


### Fibre Connectivity

With best-in-class physical infrastructure solutions, Panduit provides the broadest offering of end-to-end HSDT solutions: optical fiber, direct attach copper cable assemblies, and twisted pair copper cabling. This gives data center architects and managers maximum flexibility in the design, layout, and implementation of their data centers. Specifically, HSDT enables advanced network designs such as fabric-based architectures and FCoE, as well as higher bandwidth deployments such as 10/40/100 Gig Ethernet LANs and 8/16/32 Gig Fibre Channel SANs to be deployed independently or in various combinations.

- Patch cords conform to 300 meters with an 850nm source per IEEE 802.3ae 10 GbE standard
- Backward compatible for use with all 50/125µm system requirements
- Push-pull connectors are easy to connect and disconnect or speed of deployment

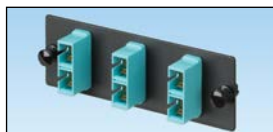
### Fibre Adapter Panels



FAP12WAQDLC



FAP12WBUDLCZ



FFAP6WAQDSCZ



FAP6WBUDSCZ



FAP6WST

Part Number	Description	Std. Pkg. Qty.	Std. Ctn. Qty.
FAP12WAQDLC	FAP with twelve LC 10 GbE duplex multimode adapters (Aqua), phosphor bronze. LC 10Gig™ OM3/OM4 FAP loaded with twelve LC 10Gig™ Duplex Multimode Fiber Optic Adapters (Aqua) with phosphor bronze split sleeves.	1	10
FAP12WAQDLCZ	FAP with twelve LC 10 GbE duplex multimode adapters (Aqua), zirconia. LC 10Gig™ OM3/OM4 FAP loaded with twelve LC 10Gig™ Duplex Multimode Fiber Optic Adapters (Aqua) with zirconia ceramic split sleeves.	1	10
FAP12WBUDLCZ	FAP with twelve LC duplex adapters (Blue), zirconia. LC OS1/OS2 FAP loaded with twelve LC duplex singlemode fiber optic adapters (Blue) with zirconia ceramic split sleeves.	1	10
FAP6WAQDLC	FAP with six LC 10 GbE duplex multimode adapters (Aqua), phosphor bronze. LC 10Gig™ OM3/OM4 FAP loaded with six LC 10Gig™ Duplex Multimode Fiber Optic Adapters (Aqua) with phosphor bronze split sleeves.	1	10
FAP6WAQDLCZ	FAP with six LC 10 GbE duplex multimode adapters (Aqua), zirconia. LC 10Gig™ OM3/OM4 FAP loaded with six LC 10Gig™ Duplex Multimode Fiber Optic Adapters (Aqua) with zirconia ceramic split sleeves.	1	10
FAP6WAQDSCZ	FAP with six SC 10 GbE duplex multimode adapters (Aqua), zirconia. SC 10Gig™ OM3/OM4 FAP loaded with six SC 10Gig™ Duplex Multimode Fiber Optic Adapters (Aqua) with zirconia ceramic split sleeves.	1	10
FAP6WBUDLCZ	FAP with six LC duplex adapters (Blue), zirconia. LC OS1/OS2 FAP loaded with six LC duplex singlemode fiber optic adapters (Blue) with zirconia ceramic split sleeves.	1	10
FAP6WBUDSCZ	FAP with six SC duplex adapters (Blue), zirconia. SC FAP loaded with six SC duplex singlemode fiber optic adapters (Blue) with zirconia ceramic split sleeves.	1	10
FAP6WST	FAP with six ST simplex multimode adapters, phosphor bronze. ST FAP loaded with six ST simplex multimode fiber optic adapters with phosphor bronze split sleeves.	1	10

### Blank Adapter Panels

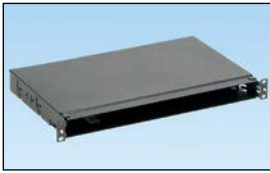


FAPB

Part Number	Description	Std. Pkg. Qty.	Std. Ctn. Qty.
FAPB	Blank FAP. Blank fiber adapter panel – reserves space for future use.	1	10

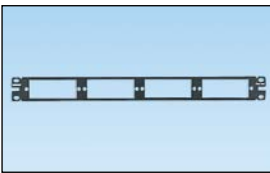


## Fibre Trays



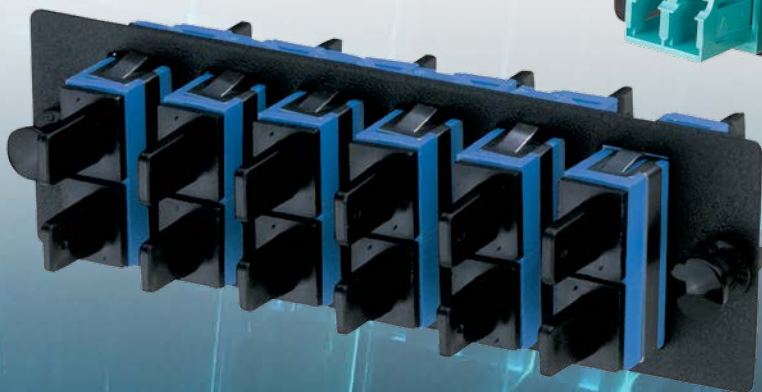
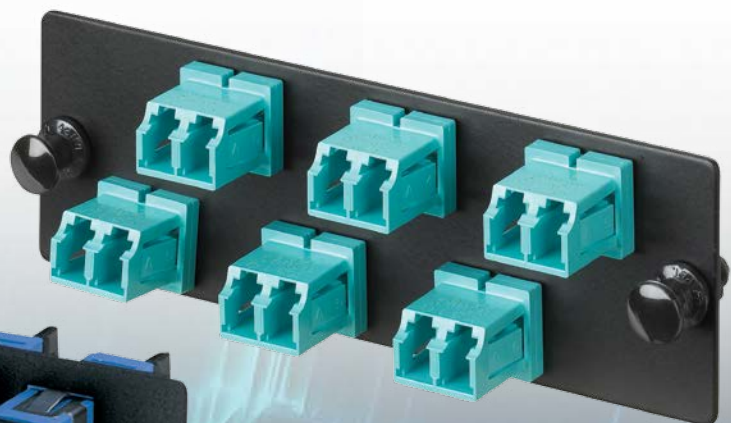
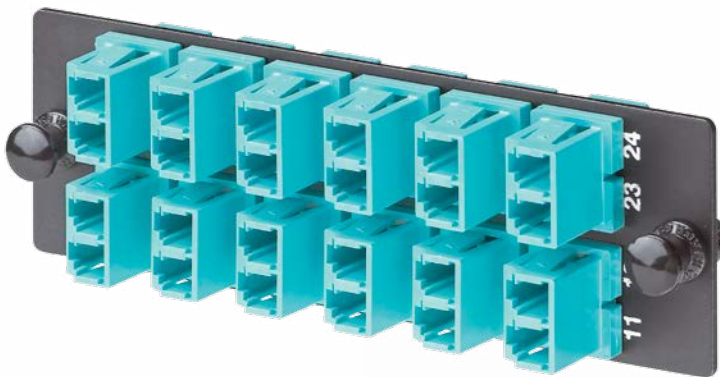
Part Number	Description	Std. Pkg. Qty.	Std. Ctn. Qty.
FMT1	Rack mount fibre tray, 1 RU. Mount with CFAPPBL1 fibre adapter patch panel to hold up to four QuickNet™ Cassettes, FAP, and FMP adapter panels. Mount with CFAPPBL1 fiber adapter patch panel to hold up to four QuickNet™ Cassettes, FAP, and FMP adapter panels. Dimensions: 1.75"H x 17.16"W X 11.16"D (44.4mm x 433.3mm x 283.5mm)	1	—

## Fibre Patch Panels



CFAPPBL1

Part Number	Description	Std. Pkg. Qty.	Std. Ctn. Qty.
CFAPPBL1	Flat fiber patch panel 1 RU. Holds up to four FAP or FMP adapter panels.	1	10

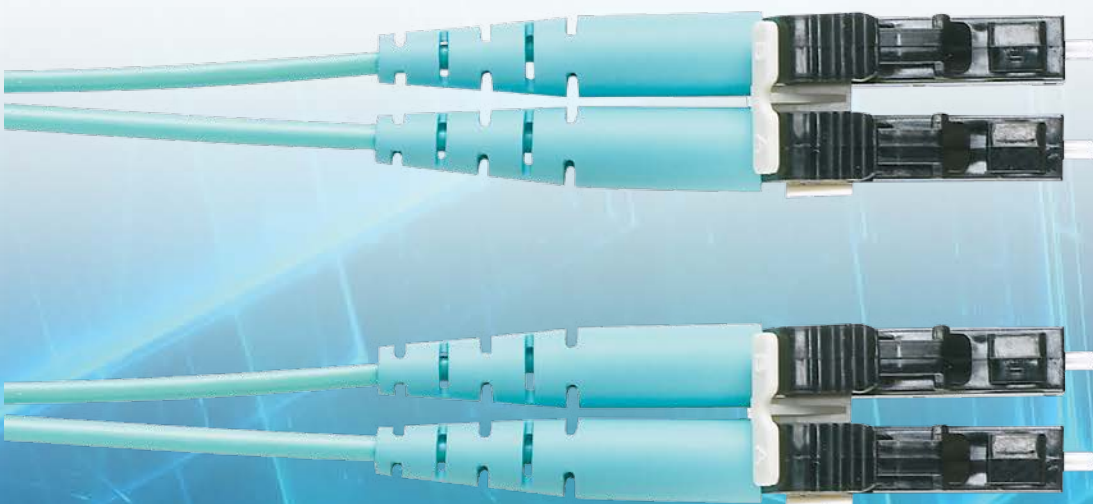


### Patch Cords – 2-Fibres, LC Duplex to LC Duplex



F52ELLNLNSNM001

Part Number	Description	Std. Pkg. Len.	Std. Pkg. Qty.
F52ELLNLNSNM001	OM2 2-fibre, 1.6mm jacket patch cord, low smoke zero halogen (LSZH) rated, LC duplex to LC duplex, Std. IL, 1m.	1m	1
F52ELLNLNSNM002	OM2 2-fibre, 1.6mm jacket patch cord, low smoke zero halogen (LSZH) rated, LC duplex to LC duplex, Std. IL, 2m.	2m	1
F52ELLNLNSNM003	OM2 2-fibre, 1.6mm jacket patch cord, low smoke zero halogen (LSZH) rated, LC duplex to LC duplex, Std. IL, 3m.	3m	1
F62ELLNLNSNM001	OM1 2-fibre, 1.6mm jacket patch cord, low smoke zero halogen (LSZH), LC duplex to LC duplex, Std IL, 1m.	1m	—
F62ELLNLNSNM002	OM1 2-fibre, 1.6mm jacket patch cord, low smoke zero halogen (LSZH), LC duplex to LC duplex, Std IL, 2m.	2m	—
F62ELLNLNSNM003	OM1 2-fibre, 1.6mm jacket patch cord, low smoke zero halogen (LSZH), LC duplex to LC duplex, Std IL, 3m.	3m	—
FX2ELLNLNSNM001	OM3 2-fibre, 1.6mm jacket patch cord, low smoke zero halogen rated, LC duplex to LC duplex, Std. IL, 1m.	1m	1
FX2ELLNLNSNM002	OM3 2-fibre, 1.6mm jacket patch cord, low smoke zero halogen rated, LC duplex to LC duplex, Std. IL, 2m.	2m	1
FX2ELLNLNSNM003	OM3 2-fibre, 1.6mm jacket patch cord, low smoke zero halogen rated, LC duplex to LC duplex, Std. IL, 3m.	3m	1
FX2ELLNLNSNM004	OM3 2-fibre, 1.6mm jacket patch cord, low smoke zero halogen rated, LC duplex to LC duplex, Std. IL, 4m.	4m	1
FX2ELLNLNSNM005	OM3 2-fibre, 1.6mm jacket patch cord, low smoke zero halogen rated, LC duplex to LC duplex, Std. IL, 5m.	5m	1
FX2ELLNLNSNM006	OM3 2-fibre, 1.6mm jacket patch cord, low smoke zero halogen rated, LC duplex to LC duplex, Std. IL, 6m.	6m	1
FX2ELLNLNSNM007	OM3 2-fibre, 1.6mm jacket patch cord, low smoke zero halogen rated, LC duplex to LC duplex, Std. IL, 7m.	7m	1
FX2ELLNLNSNM008	OM3 2-fibre, 1.6mm jacket patch cord, low smoke zero halogen rated, LC duplex to LC duplex, Std. IL, 8m.	8m	1
FX2ELLNLNSNM009	OM3 2-fibre, 1.6mm jacket patch cord, low smoke zero halogen rated, LC duplex to LC duplex, Std. IL, 9m.	9m	1
FX2ELLNLNSNM010	OM3 2-fibre, 1.6mm jacket patch cord, low smoke zero halogen rated, LC duplex to LC duplex, Std. IL, 10m.	10m	1



## Fibre Patch Cords – 2-Fibres, LC Push-Pull to LC Push-Pull



F92ELQNQNSNM

Part Number	Description	Std. Pkg. Len.	Std. Ctn. Qty.
F92ELQNQNSNM001	OS1/OS2 2-fiber, low smoke zero halogen rated, LC push-pull to LC push-pull, singlemode patch cord with custom push-pull strain relief boot and duplex clip, 1.6mm jacket, Std. IL, 1m.	1m	1
F92ELQNQNSNM002	OS1/OS2 2-fiber, low smoke zero halogen rated, LC push-pull to LC push-pull, singlemode patch cord with custom push-pull strain relief boot and duplex clip, 1.6mm jacket, Std. IL, 2m.	2m	1
F92ELQNQNSNM003	OS1/OS2 2-fiber, low smoke zero halogen rated, LC push-pull to LC push-pull, singlemode patch cord with custom push-pull strain relief boot and duplex clip, 1.6mm jacket, Std. IL, 3m.	3m	1
F92ELQNQNSNM005	OS1/OS2 2-fiber, low smoke zero halogen rated, LC push-pull to LC push-pull, singlemode patch cord with custom push-pull strain relief boot and duplex clip, 1.6mm jacket, Std. IL, 5m.	5m	1
F92ELQNQNSNM007	OS1/OS2 2-fiber, low smoke zero halogen rated, LC push-pull to LC push-pull, singlemode patch cord with custom push-pull strain relief boot and duplex clip, 1.6mm jacket, Std. IL, 7m.	7m	1
F92ELQNQNSNM010	OS1/OS2 2-fiber, low smoke zero halogen rated, LC push-pull to LC push-pull, singlemode patch cord with custom push-pull strain relief boot and duplex clip, 1.6mm jacket, Std. IL, 10m.	10m	1
F92ELQNQNSNM020	OS1/OS2 2-fiber, low smoke zero halogen rated, LC push-pull to LC push-pull, singlemode patch cord with custom push-pull strain relief boot and duplex clip, 1.6mm jacket, Std. IL, 20m.	20m	1
FX2ELQNQNSNM001	OM3 2-fiber, low smoke zero halogen, LC push-pull to LC push-pull, multimode patch cord with custom push-pull strain relief boot and duplex clip, 1.6mm jacket, Std. IL, 1m.	1m	1
FX2ELQNQNSNM002	OM3 2-fiber, low smoke zero halogen, LC push-pull to LC push-pull, multimode patch cord with custom push-pull strain relief boot and duplex clip, 1.6mm jacket, Std. IL, 2m.	2m	1
FX2ELQNQNSNM003	OM3 2-fiber, low smoke zero halogen, LC push-pull to LC push-pull, multimode patch cord with custom push-pull strain relief boot and duplex clip, 1.6mm jacket, Std. IL, 3m.	3m	1
FX2ELQNQNSNM005	OM3 2-fiber, low smoke zero halogen, LC push-pull to LC push-pull, multimode patch cord with custom push-pull strain relief boot and duplex clip, 1.6mm jacket, Std. IL, 5m.	5m	1
FX2ELQNQNSNM007	OM3 2-fiber, low smoke zero halogen, LC push-pull to LC push-pull, multimode patch cord with custom push-pull strain relief boot and duplex clip, 1.6mm jacket, Std. IL, 7m.	7m	1
FX2ELQNQNSNM010	OM3 2-fiber, low smoke zero halogen, LC push-pull to LC push-pull, multimode patch cord with custom push-pull strain relief boot and duplex clip, 1.6mm jacket, Std. IL, 10m.	10m	1
FX2ELQNQNSNM020	OM3 2-fiber, low smoke zero halogen, LC push-pull to LC push-pull, multimode patch cord with custom push-pull strain relief boot and duplex clip, 1.6mm jacket, Std. IL, 20m.	20m	1





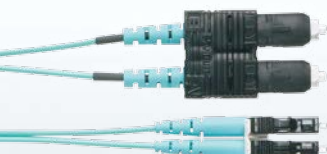
### Patch Cords – 2-Fibres, SC Duplex to SC Duplex

Part Number	Description	Std. Pkg. Len.	Std. Ctn. Qty.
F523LSNSNSNM001	OM2 2-fiber 3mm jacket, patchcord, low smoke zero halogen (LSZH) rated, SC duplex to SC duplex, Std. IL, 1m.	1m	1
F523LSNSNSNM002	OM2 2-fiber 3mm jacket, patchcord, low smoke zero halogen (LSZH) rated, SC duplex to SC duplex, Std. IL, 2m.	2m	1
F523LSNSNSNM003	OM2 2-fiber 3mm jacket, patchcord, low smoke zero halogen (LSZH) rated, SC duplex to SC duplex, Std. IL, 3m.	3m	1
F923LSNSNSNM003	OS1/OS2 2-fibre 3mm jacket patch cord, low smoke zero halogen (LSZH) rated, SC duplex to SC duplex, Std IL, 3m.	3m	1
F923LSNSNSNM005	OS1/OS2 2-fibre 3mm jacket patch cord, low smoke zero halogen (LSZH) rated, SC duplex to SC duplex, Std IL, 5m.	5m	1
F923LSNSNSNM007	OS1/OS2 2-fibre 3mm jacket patch cord, low smoke zero halogen (LSZH) rated, SC duplex to SC duplex, Std IL, 7m.	7m	1
F923LSNSNSNM010	OS1/OS2 2-fibre 3mm jacket patch cord, low smoke zero halogen (LSZH) rated, SC duplex to SC duplex, Std IL, 10m.	10m	1
FX23LSNSNSNM001	OM3 2-fibre, 3mm jacket patch cord, LSZH, SC duplex to SC duplex, Std. IL, 1m.	1m	1
FX23LSNSNSNM002	OM3 2-fibre, 3mm jacket patch cord, LSZH, SC duplex to SC duplex, Std. IL, 2m.	2m	1
FX23LSNSNSNM003	OM3 2-fibre, 3mm jacket patch cord, LSZH, SC duplex to SC duplex, Std. IL, 3m.	3m	1

### Patch Cords – 2-Fibres, SC Duplex to LC Duplex



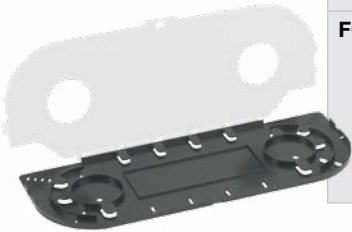
F623LSNSNSNM



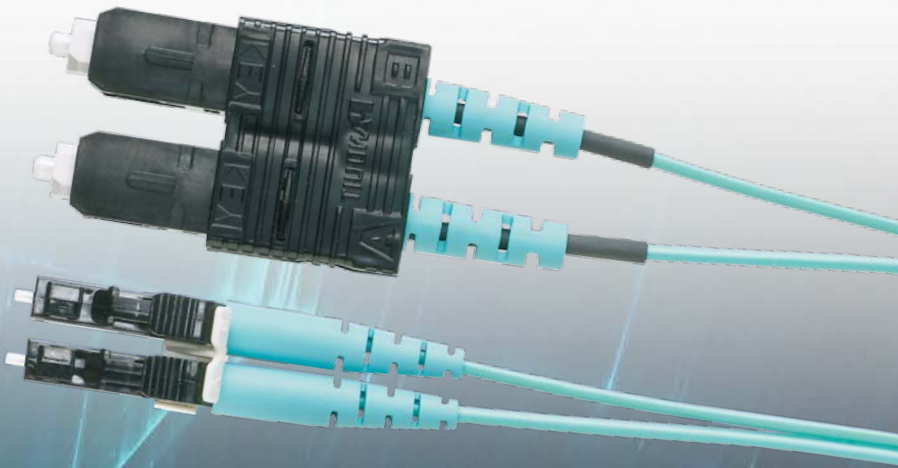
FX2ELSNLNSNM

Part Number	Description	Std. Pkg. Len.	Std. Ctn. Qty.
F623LSNSNSNM001	OM1 2-fiber 3mm jacket patchcord, low smoke zero halogen (LSZH) rated, SC duplex to SC duplex, Std. IL, 1m.	1m	1
F623LSNSNSNM002	OM1 2-fiber 3mm jacket patchcord, low smoke zero halogen (LSZH) rated, SC duplex to SC duplex, Std. IL, 2m.	2m	1
F623LSNSNSNM003	OM1 2-fiber 3mm jacket patchcord, low smoke zero halogen (LSZH) rated, SC duplex to SC duplex, Std. IL, 3m.	3m	1
F623LSNSNSNM005	OM1 2-fiber 3mm jacket patchcord, low smoke zero halogen (LSZH) rated, SC duplex to SC duplex, Std. IL, 5m.	5m	1
F623LSNSNSNM010	OM1 2-fiber 3mm jacket patchcord, low smoke zero halogen (LSZH) rated, SC duplex to SC duplex, Std. IL, 10m.	10m	1
FX2ELSNLNSNM001	OM3 2-fiber patch cord, low smoke zero halogen rated, SC duplex to LC duplex with 1.6mm jacket, Std. IL, 1m.	1m	1
FX2ELSNLNSNM002	OM3 2-fiber patch cord, low smoke zero halogen rated, SC duplex to LC duplex with 1.6mm jacket, Std. IL, 2m.	2m	1
FX2ELSNLNSNM003	OM3 2-fiber patch cord, low smoke zero halogen rated, SC duplex to LC duplex with 1.6mm jacket, Std. IL, 3m.	3m	1
FX2ELSNLNSNM004	OM3 2-fiber patch cord, low smoke zero halogen rated, SC duplex to LC duplex with 1.6mm jacket, Std. IL, 4m.	4m	1
FX2ELSNLNSNM005	OM3 2-fiber patch cord, low smoke zero halogen rated, SC duplex to LC duplex with 1.6mm jacket, Std. IL, 5m.	5m	1
FX2ELSNLNSNM006	OM3 2-fiber patch cord, low smoke zero halogen rated, SC duplex to LC duplex with 1.6mm jacket, Std. IL, 6m.	6m	1
FX2ELSNLNSNM007	OM3 2-fiber patch cord, low smoke zero halogen rated, SC duplex to LC duplex with 1.6mm jacket, Std. IL, 7m.	7m	1
FX2ELSNLNSNM010	OM3 2-fiber patch cord, low smoke zero halogen rated, SC duplex to LC duplex with 1.6mm jacket, Std. IL, 10m.	10m	1

Fibre Optic Splice Module



Part Number	Description	Std. Pkg. Qty.	Std. Ctn. Qty.
FOSMF	<p>Fiber optic splice module holds and protects up to 24 fusion splices. Self-stacking modules with integral cable management and fiber slacking/spooling features. Black plastic base and clear plastic hinged cover. For use with Panduit Opticom® FCE*U, FRME*U, and FMT series enclosures.</p> <p>Dimensions: 0.30"H x 14.03"W x 5.28"D (7.6mm x 356.4mm x 134.1mm)</p>	1	10

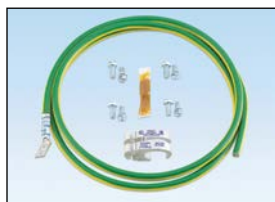


### Grounding Solutions

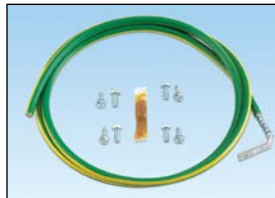
Panduit grounding and bonding solutions meet customer needs and today's critical application requirements for grounding data centers and telecommunication spaces. Panduit™ StructuredGround™ Grounding System provides a high quality, visually verifiable, and dedicated grounding path to maintain system performance and protect network equipment and personnel. Panduit grounding and bonding components are designed for use on racks and cabinets which meet EIA-310.

- Ensures highest network system performance
- Prevents equipment damage
- Maximizes uptime
- Meets TIA-942, TIA-607-B, IEEE Std 1100 (IEEE Emerald Book), UL and CSA
- Promotes personnel protection
- Designed for flexibility and easy installation

### StructuredGround™ Grounding Kits for Net-Access™ Cabinets and 4 Post Racks



**RGCBNJ660P22**



**RGEJ1024URT**



**RGESD-1YT**



**RGESDWS**



**RGRB19CN**

Part Number	Description	Std. Pkg. Qty.	Std. Ctn. Qty.
<b>RGCBNJ660P22</b>	Jumper Kits, Common Bonding Network (CBN), #6 AWG (16mm <sup>2</sup> ) jumper; 60" (1.52m) length; 45° bent lug on grounding strip side; provided with .16 oz. (5cc) of antioxidant, two each #12-24 x 1/2", M6 x 12mm, #10-32 x 1/2" and M5 x 12mm thread-forming screws and a copper compression HTAP* for connecting to the MCBN.	1	10
<b>RGEJ1024URT</b>	Equipment grounding jumper. #10 AWG (6mm <sup>2</sup> ) jumper, 24 in. (609.6mm) L, pre-terminated with two #10 (5.3mm) stud hole ring terminals to provide a bolt-on solution for grounding network equipment.	1	10
<b>RGEJ624PHY</b>	Jumper kits, equipment grounding, #6 AWG (16mm <sup>2</sup> ) jumper; bent lug on grounding strip side to straight lug on equipment; provided with .16 oz. (5cc) of antioxidant and two each #12-24 x 1/2", M6 x 12mm, #10-32 x 1/2" and M5 x 12mm thread-forming screws.	1	10
<b>RGEJ636PFY</b>	Jumper kits, equipment grounding, #6 AWG (16mm <sup>2</sup> ) jumper; bent lug on grounding strip side to straight lug on equipment; provided with .16 oz. (5cc) of antioxidant and two each #12-24 x 1/2", M6 x 12mm, #10-32 x 1/2" and M5 x 12mm thread-forming screws.	1	10
<b>RGEJ660PF</b>	Jumper kits, equipment grounding, #6 AWG (16mm <sup>2</sup> ) jumper; bent lug on grounding strip side to straight lug on equipment.	1	10
<b>RGEJ660U</b>	Equipment grounding jumper. #6 AWG (16mm <sup>2</sup> ) jumper, 60 in. (1524mm) L, pre-terminated with two straight slotted lugs to provide a bolt-on solution for grounding network equipment.	1	10
<b>RGESD-1Y</b>	ESD port kits, one-hole, thread-forming screws. One-hole ESD port; provided with an ESD protection sticker, .16 oz. (5cc) of antioxidant and 1 each #12-24 x 1/2", M6 x 12mm, #10-32 x 1/2" and M5 x 12mm thread-forming screws.	1	20
<b>RGESDWS</b>	ESD wrist strap, 6' (1.8m) cord, Blue. Adjustable fabric ESD wrist strap with 6' coil cord, banana plug, 1 megohm resistor and 4mm snap.	1	—
<b>RGRB19CN</b>	Grounding busbar kits, 19" (483mm) length, twenty mounting holes, 5/8" (15.9mm) hole spacing. Grounding busbar; 19" (483mm) length; tin-plated; twenty holes arranged for flexibility in mounting with twenty #12-24 x 1/2" hex head screws installed; mounting hole sets have 5/8" (15.9mm) spacing; provided with two cage nut bonding studs and four #12-24 bonding nuts.	1	—

### Cabinet Cage Nuts



**CNBK**



**CNWSM6-C**

Part Number	Description	Std. Pkg. Qty.	Std. Ctn. Qty.
<b>CNBK</b>	Green bonding cage nut, includes 50 #12-24 bonding cage nuts (.06 – .11 thick panel) and 50 #12-24 x 1/2" bonding screws with #2 Phillips/slotted combo hex head (use 5/16" or 8mm socket).	1	—
<b>CNWSM6-C</b>	M6 screw with cage nut.	100	1000



## Security Solutions

Network security devices block unauthorized access to existing network infrastructure in the data center. These devices save time and money associated with network downtime, data security breaches, infrastructure repair, and hardware replacement due to theft. The innovative design of the blockout device snaps into modules and is released with the removal tool, ensuring the safety and security of the network infrastructure. The versatile design of the lock-in device is compatible with most existing patch cords, faceplates, patch panels, IP cameras, and other IP devices.

It is also compatible with VoIP phones to help prevent unauthorized tampering with connectivity to ensure E911 continuity.

### RJ45 Jack Blockout Devices



PSL-DCJB



PSL-DCJB-BL

Part Number	Description	Std. Pkg. Qty.	Std. Ctn. Qty.
PSL-DCJB	Jack module block-out device, 10 block-outs (Red) and 1 removal tool (Black).	1	20
PSL-DCJB-BL	Jack module block-out device, 10 block-outs (Black) and 1 removal tool (Black).	1	20

### USB Blockout Devices



PSL-DCJB



PSL-DCJB-BL



PSL-DCJB-BL

Part Number	Description	Std. Pkg. Qty.	Std. Ctn. Qty.
PSL-PERM-USBA	Package of ten permanent USB Type 'A' blockout devices.	1	20
PSL-USBA	Package of five USB Type 'A' blockout devices and one removal tool.	1	20
PSL-USBB	Package of ten USB Type 'B' Blockout Devices and one removal tool.	1	20

### Flush Mount RJ45 Plug Lock-In Devices



PSL-DCPLS-BL



PSL-DCPLX

Part Number	Description	Std. Pkg. Qty.	Std. Ctn. Qty.
PSL-DCPLS	Super recessed lock-in device, ten devices (Red) and one tool (Black).	1	20
PSL-DCPLS-BL	Super recessed lock-in device, ten devices (Black) and one tool (Black).	1	20
PSL-DCPLX	Standard lock-in device, ten devices (Red) and one tool (Black).	1	20
PSL-DCPLX-BL	Standard lock-in device, ten devices (Black) and one tool (Black).	1	20

### Recessed RJ45 Plug Lock-In Devices



PSL-DCPLRX

Part Number	Description	Std. Pkg. Qty.	Std. Ctn. Qty.
PSL-DCPLRX	Recessed lock-in device, ten devices (Red) and one tool (Black) Package of ten recessed RJ45 plug lock-in devices and one installation/removal tool.	1	20
PSL-DCPLRX-BL	Recessed lock-in device, ten devices (Black) and one tool (Black). Package of ten recessed RJ45 plug lock-in devices and one installation/removal tool.	1	20

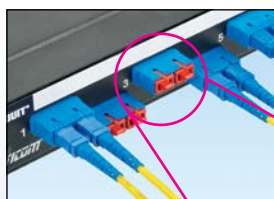
### LC Duplex Adapter Blockout Devices



PSL-LCAB-BL

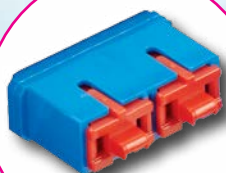
Part Number	Description	Std. Pkg. Qty.	Std. Ctn. Qty.
PSL-LCAB	Package of ten Red LC duplex adapter blockout devices and one insertion/removal tool.	1	20
PSL-LCAB-BL	Standard LC duplex adapter blockout device, ten devices (Black) and one tool (Black).	1	20

### Adapter Blockout Devices



PSL-LCAB-BL

Part Number	Description	Std. Pkg. Qty.	Std. Ctn. Qty.
PSL-SCBD	Red SC adapter blockout device. Package of ten SC adapter blockout devices and one removal tool.	1	20



## Power Outlet Units

Panduit Power Outlet Units (POUs) safely and efficiently manage and distribute power to cabinet deployed equipment. Available as single phase or three phase modules vertically or horizontally mounted as mounted; metered, intelligent per unit or per port switched; choices of C13 and C19 connectors.

### Vertical Power Outlet Units



QS1D2B2BN24AA1

Part Number	Description	Std. Pkg. Qty.	Std. Ctn. Qty.
QS1D2B2BN24AA1	Vertical switched power strip 32 A, 230V, 20 IEC C-13 and 4 IEC C-19 locking receptacles, RJ-45 Ethernet port with two RJ12 remote environmental ports, two 16 A double pole magnetic breaker on-off switch with integral switch guard, and 3mm power cord with IEC 60309 - 2P+E 32A pin in sleeve connector. Complies with IEC 60950-1, EN 55022, EN 55024 and CE Marked.  Dimensions: 70.0"H x 2.5"W x 2.25"D Breaker Doghouse add 1.44" (87.4mm) to overall depth (1778mm x 64mm x 58mm)	1	—

### Vertical Power Outlet Units – Basic



Part Number	Description	Std. Pkg. Qty.	Std. Ctn. Qty.
VB0D2B2BM30P1	Vertical power strip 32 A, 230V, 24 IEC C-13 and 6 IEC C-19 receptacles, two 16 A single pole magnetic breaker / on-off switch with integral switch guard, and a 3 meter power cord with a IEC 60309 - 2P+ E pin in sleeve connector. Complies with IEC 60950-1, EN 55022, EN 55024 and CE Marked.  Dimensions: 66.3"H x 2.0"W x 2.0"D (1683mm x 51mm x 51mm).	1	—
VB1D2B2BM30P1	Vertical power strip 32 A, 230V, 24 IEC C-13 and 6 IEC C-19 receptacles, two 16 A single pole magnetic breaker / on-off switch with integral switch guard, red LED power monitor and a 3 meter power cord with a IEC 60309 - 2P+ E pin in sleeve connector. Complies with IEC 60950-1, EN 55022, EN 55024 and CE Marked.  Dimensions: 66.3"H x 2.0"W x 2.0"D (1683mm x 51mm x 51mm)	1	—

### Vertical Power Outlet Units – Networked



Part Number	Description	Std. Pkg. Qty.	Std. Ctn. Qty.
QZ1D2P6BM30P1	Vertical power strip 32 A, 230/400V, WYE, 24 IEC C-13 and 6 IEC C-19 receptacles, red LED current monitor, 16 Amp two pole magnetic breaker on-off switch with integral switch guard and 3 meter power cord with IEC 60309 3P+N+E pin in sleeve connector. Complies with IEC 60950-1, EN 55022, EN 55024 and CE Marked. Dimensions: 66.3"H x 2.0"W x 2.0"D (1683mm x 51mm x 51mm)	1	—
QZ1D2Q0BA30P1	Vertical power strip 16 A, 230/400V, WYE, 24 IEC C-13 and 6 IEC C-19 receptacles, RJ-45 Ethernet port with red LED current monitor, and 10' power cord with IEC 60309 3P+N+ E pin in sleeve connector. Complies with IEC 60950-1, EN 55022, EN 55024 and CE Marked.  Dimensions: 66.3"H x 2.0"W x 2.0"D (1683mm x 51mm x 51mm)	1	—



## Vertical Power Outlet Units – Networked/Environmental

The PViQ™ POU's provide continuous real-time power and environmental monitoring via the network for enhanced system management and reliability. The PViQ™ POU's safely and efficiently manage and distribute power to allow multiple pieces of equipment to share a single power connector to enhance scalability of network build outs.



**QN1D2B2BN30P1**

Part Number	Description	Std. Pkg. Qty.	Std. Ctn. Qty.
<b>QN1D2A0BA30P1</b>	Network with environmental POU, vertical, 16A,1~, IEC 60309 2P+E splash proof plug, 230V, 24 C-13 and six C-19 receptacles. Vertical power strip 16 A, 230V, 24 IEC C-13 and 6 IEC C-19 receptacles, with LED current monitor, RJ-45 Ethernet port with two RJ12 remote environmental ports, and remote display port, and 3m power cord with IEC 60309 - 2P+E, pin in sleeve connector. Complies with IEC 60950-1, EN 55022, EN 55024 and CE Marked. Dimensions: 66.3"H x 2.0"W x 2.3"D (1683mm x 51mm x 58mm)	1	—
<b>QN1D2B2BN30P1</b>	Vertical power strip 32 A, 230V, 24 IEC C-13 and 6 IEC C-19 receptacles, with LED current monitor, RJ-45 Ethernet port with two RJ12 remote environmental ports, two and remote display port, two 16 A double pole magnetic breaker/on-off switch with integral switch guard, and 3m power cord with IEC 60309 - 2P+E pin in sleeve connector. Complies with IEC 60950-1, EN 55022, EN 55024 and CE Marked. Dimensions: 66.3"H x 2.0"W x 2.3"D Breaker Doghouse add 1.44" (87.4) to overall depth (1683mm x 51mm x 58mm)	1	—
<b>QN1D2P3BN30P1</b>	Vertical power strip 32 A, 230/400V, WYE, 24 IEC C-13 and 6 IEC C-19 receptacles, with LED current monitor, RJ-45 Ethernet port with two RJ12 remote environmental ports, and remote display port, three 16 A double pole magnetic breaker/on-off switch with integral switch guard, and 3m power cord with IEC 60309 - 3P+N+E, pin in sleeve connector. Complies with IEC 60950-1, EN 55022, EN 55024 and CE Marked. Dimensions: 66.3"H x 2.0"W x 2.3"D Breaker Doghouse add 1.44" (87.4) to overall depth (1683mm x 51mm x 58mm)	1	—

## Horizontal Power Outlet Units

The Panduit vertical and horizontal power strips offer a convenient way to distribute power to active equipment within racks and cabinets. Built-in power meters and circuit breakers provide critical power information and protection for improved network reliability. Mounting flexibility allows quick and easy installation.



**HB0D2A0BA10M1**



**HB1B1L4BT10M1**



**HB1D2J0AA10M1**

Part Number	Description	Std. Pkg. Qty.	Std. Ctn. Qty.
<b>HB0D2A0BA10M1</b>	Horizontal power strip 16 A, 230V, 10 IEC C-13 receptacles, and a 3 meter power cord with a IEC 60309 – 2P+ E pin in sleeve connector. Complies with IEC 60950-1, EN 55022, EN 55024 and CE Marked. Dimensions: 1.7"H x 17.0"W x 1.6"D (43mm x 432mm x 41mm)	1	—
<b>HB1B1L4BT10M1</b>	Horizontal power strip 30 A, 208V, 10 IEC C-13 receptacles, four 15 A thermal breakers, red LED current monitor, and 10' power cord with NEMA L6-30P twist lock plug. UL and c-UL Listed. Dimensions: 1.7"H x 17.0"W x 1.6"D (43mm x 431mm x 41mm)	1	—
<b>HB1D2J0AA10M1</b>	Horizontal power strip with a 16 A, 230V, 10 IEC C-13 receptacles, red LED current monitor, with C-20 power inlet, retaining clamp included. Complies with IEC 60950-1, EN 55022, EN 55024, and CE Marked. Dimensions: 1.7"H x 17.0"W x 1.6"D (44mm x 432mm x 41mm)	1	—

## SmartZone™ Rack Energy Kits

To help gain greater visibility into data center performance, Panduit offers SmartZone™ rack energy kits for new and legacy data centers with fewer than 30 racks that enable cost-effective, real-time monitoring, alerting, and management of data center power and environmental information. Bundled with monitoring software, a gateway, and a choice of intelligent devices SmartZone™ rack energy kits are easy to install and deploy on a per rack basis.



**RMSC2T2PCLA01**



**RMSP2T2POB2**



**RMSQ2T2POB20**

Part Number	Description	Std. Pkg. Qty.	Std. Ctn. Qty.
<b>RMSC2T2PCLA01</b>	SmartZone™ Rack Energy Kit with Clamp Meters non-invasively add intelligent power and environmental monitoring capabilities to non-intelligent rack PDUs. Kit includes (2) Clamp Meters, SmartZone™ Rack Monitoring Software, (1) SmartZone™ Gateway EP042, (4) Patch Cords and (2) temperature sensors.	1	—
<b>RMSP2T2POB209E</b>	SmartZone™ Rack Energy Kits with Rack PDUs monitor power consumption and energy conditions on a per rack basis. Kit includes (2) 16A Single Phase Vertical SmartZone™ Rack PDUs 21xC13, 3xC19 IEC 60309 Input Plug, Monitor only, SmartZone™ Rack Monitoring Software, (1) SmartZone™ Gateway EP042, (4) patch cords and (2) temperature sensors.	1	—
<b>RMSP2T2POB210E</b>	SmartZone™ Rack Energy Kits with Rack PDUs monitor power consumption and energy conditions on a per rack basis. Kit includes (2) 32A Single Phase Vertical SmartZone™ Rack PDUs 21xC13, 3xC19, IEC 60309 Input Plug, Monitor only, SmartZone™ Rack Monitoring Software, (1) SmartZone™ Gateway EP042, (4) patch cords and (2) temperature sensors.	1	—
<b>RMSP2T2POB211E</b>	SmartZone™ Rack Energy Kits with Rack PDUs monitor power consumption and energy conditions on a per rack basis. Kit includes (2) 32A Single Phase Vertical SmartZone™ Rack PDUs 21xC13, 3xC19, IEC 60309 Input Plug, Monitor and Control, SmartZone™ Rack Monitoring Software, (1) SmartZone™ Gateway EP042, (4) patch cords and (2) temperature sensors.	1	—
<b>RMSP2T2POB212E</b>	SmartZone™ Rack Energy Kits with Rack PDUs monitor power consumption and energy conditions on a per rack basis. Kit includes (2) 32A Single Phase Per-Outlet Vertical SmartZone™ Rack PDUs 21xC13, 3xC19, IEC 60309 Input Plug, Monitor and Control, SmartZone™ Rack Monitoring Software, (1) SmartZone™ Gateway EP042, (4) patch cords and (2) temperature sensors.	1	—
<b>RMSP2T2POB213E</b>	SmartZone™ Rack Energy Kits with Rack PDUs monitor power consumption and energy conditions on a per rack basis. Kit includes (2) 32A Three Phase Vertical SmartZone™ Rack PDUs 24xC13, 6xC19, IEC 60309 Input Plug, Monitor only, SmartZone™ Rack Monitoring Software, (1) SmartZone™ Gateway EP042, (4) patch cords and (2) temperature sensors.	1	—
<b>RMSQ2T2POB201E</b>	SmartZone™ Rack Energy Kit with Zero-RU Inline Meters adds intelligent power and environmental monitoring capabilities to non-intelligent rack PDUs. Kit includes (2) Zero-RU Inline Meters, 16A, Single Phase, IEC 60309 Commando Plugs and Sockets, SmartZone™ Rack Monitoring Software, (1) SmartZone™ Gateway EP042, (4) patch cords, and (2) temperature sensors.	1	—
<b>RMSQ2T2POB202E</b>	SmartZone™ Rack Energy Kit with Zero-RU Inline Meters adds intelligent power and environmental monitoring capabilities to non-intelligent rack PDUs. Kit includes (2) Zero-RU Inline Meters, 16A, Three Phase, IEC 60309 Commando Plugs and Sockets, SmartZone™ Rack Monitoring Software, (1) SmartZone™ Gateway EP042, (4) patch cords, and (2) temperature sensors.	1	—
<b>RMSQ2T2POB203E</b>	SmartZone™ Rack Energy Kit with Zero-RU Inline Meters adds intelligent power and environmental monitoring capabilities to non-intelligent rack PDUs. Kit includes (2) Zero-RU Inline Meters, 32A, Single Phase, IEC 60309 Commando Plugs and Sockets, SmartZone™ Rack Monitoring Software, (1) SmartZone™ Gateway EP042, (4) patch cords, and (2) temperature sensors.	1	—
<b>RMSQ2T2POB204E</b>	SmartZone™ Rack Energy Kit with Zero-RU Inline Meters adds intelligent power and environmental monitoring capabilities to non-intelligent rack PDUs. Kit includes (2) Zero-RU Inline Meters, 32A, Three Phase, IEC 60309 Commando Plugs and Sockets, SmartZone™ Rack Monitoring Software, (1) SmartZone™ Gateway EP042, (4) patch cords, and (2) temperature sensors.	1	—

### SmartZone™ Rack-Mounted Rack Energy Kits

The SmartZone™ rack-mounted rack energy kits utilize a Dual Link Box Device specifically designed for devices requiring one or more direct power feeds. The Dual Link Box Device is ideal for large servers, disk storage arrays, blade server enclosures, and network switches. These rack energy kits use the Dual Link Box Device to accurately measure critical power and energy information through polling and real-time SNMP, and the included RackKMS™ gateway to monitor and control, and to generate warnings, and critical alarms.



Part Number	Description	Std. Pkg. Qty.	Std. Ctn. Qty.
<b>RMSL2T1POB205E</b>	SmartZone™ Rack-Mounted Rack Energy Kit for remote monitoring and management of power and energy needs. Kit includes 1 Dual Link Box 16A Single Phase, IEC 60309 Plugs and Sockets, plus monitoring software, RackKMS™ Gateway, a set of ethernet cables, and 2 temperature sensors.	1	—
<b>RMSL2T1POB206E</b>	SmartZone™ Rack-Mounted Rack Energy Kit for remote monitoring and management of power and energy needs. Kit includes 1 Dual Link Box 16A Three Phase Delta, IEC 60309 Plugs and Sockets, plus monitoring software, RackKMS™ Gateway, a set of ethernet cables, and 2 temperature sensors.	1	—
<b>RMSL2T1POB207E</b>	SmartZone™ Rack-Mounted Rack Energy Kit for remote monitoring and management of power and energy needs. Kit includes 1 Dual Link Box 32A Single Phase, IEC 60309 Plugs and Sockets, plus monitoring software, RackKMS™ Gateway, a set of ethernet cables, and 2 temperature sensors.	1	—
<b>RMSL2T1POB208E</b>	SmartZone™ Rack-Mounted Rack Energy Kit for remote monitoring and management of power and energy needs. Kit includes 1 Dual Link Box 32A Three Phase Delta, IEC 60309 Plugs and Sockets, plus monitoring software, RackKMS™ Gateway, a set of ethernet cables, and 2 temperature sensors.	1	—

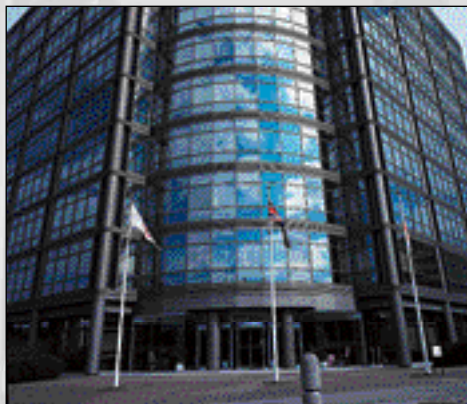




# PANDUIT™

## Comstor™

Visit us at [www.panduit.com/datacenter](http://www.panduit.com/datacenter)



For more information and technical support:

[emea-tac@panduit.com](mailto:emea-tac@panduit.com)

Phone: 44.20.8601.7200

For ordering and availability contact the  
local Comstor office:

**Westcon Africa**  
[comstorse@westconafrika.com](mailto:comstorse@westconafrika.com)

**Comstor Belgium**  
[sales@comstor.be](mailto:sales@comstor.be)  
+32 2 401 60 00

**Comstor Finland**  
[sales.fi@comstor.com](mailto:sales.fi@comstor.com)

**Comstor France**  
[sales@comstor.fr](mailto:sales@comstor.fr)  
+ 33 01 41 18 51 00  
[www.comstor.fr](http://www.comstor.fr)

**Comstor Germany**  
[sales@comstor.de](mailto:sales@comstor.de)  
+49 (0)30 346 03 – 0

**Comstor Netherlands**  
[sales@nl.comstor.com](mailto:sales@nl.comstor.com)  
+31 (0) 30 – 24 89 592

**Comstor Norway**  
[sales.no@comstor.com](mailto:sales.no@comstor.com)  
+47 67 11 87 70

**Comstor Spain**  
[datacenter@comstor.es](mailto:datacenter@comstor.es)  
+34 902 00 60 60

**Comstor South Africa**  
[sales@comstor.co.za](mailto:sales@comstor.co.za)  
Tel: +27 11 233 3333

**Comstor Sweden**  
[sales@comstor.se](mailto:sales@comstor.se)  
+46 40 650 82 00

**Comstor UK**  
[sales@comstor.co.uk](mailto:sales@comstor.co.uk)  
+44 (0)1285 647001